



Quick Road, London, W4 2BU

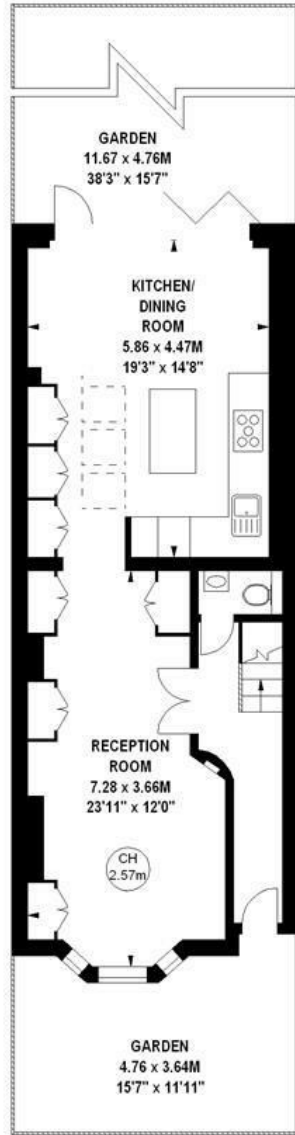
An immaculately presented two double bedroom house ideally located in the Glebe Estate offering close proximity to all amenities. Through reception room and fully integrated kitchen/breakfast room, luxury bathroom with separate shower, private South facing landscaped garden. Within a short walking distance of Turnham Green Tube Station and the extensive shopping and restaurant facilities on Chiswick High Road Unfurnished Available 23rd August. EPC - C. Hounslow Council Tax Band F

- Glebe Estate
- Two Bedrooms
- Integrated Kitchen/Breakfast Room
- Luxury Bathroom
- Seperate Shower
- Cloakroom
- Landscaped Garden
- Close to Turnham Green Station
- Unfurnished
- Available 23rd August

£3,950 Per Calendar Month

Quick Road, W4

Approximate gross internal area
103.21 sq m / 1111 sq ft

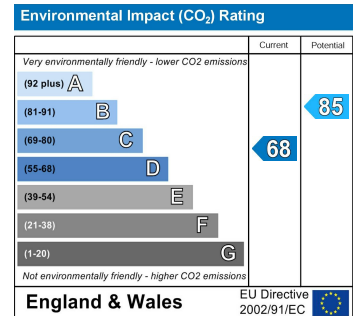
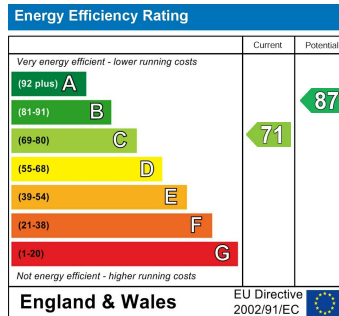


Ground Floor



First Floor

The floor plan is not to scale and measurements and areas shown are approximate and therefore should be used for illustrative purposes only. The plan has been prepared in accordance with the RICS code of Measuring Practice and whilst we have confidence in the information produced, it must not be relied on. If there is any aspect of particular importance, you should carry out or commission your own inspection of the property.
Copyright of FeaturePRO.



5-7 Turnham Green Terrace, Chiswick, London, W4 1RG
Tel 020 8747 8800
E-mail lettings@whitmanandco.com
Website www.whitmanandco.com