



Upham Park Road, London, W4 1PQ

NEW BATHROOM FITTED - A nicely presented studio apartment situated within this very popular residential road just a short walk from Chiswick High Road with its array of boutique shops and restaurants. Accommodation, separate kitchen, large studio room, double glazing, washing machine, shared patio. Local transport links include Turnham Green & Stamford Brook tube stations, numerous local bus routes with convenient vehicular access via A4 /M4 Central London, Heathrow & The West. Hounslow Council Tax Band A. The property is available 12th August and is offered part furnished.

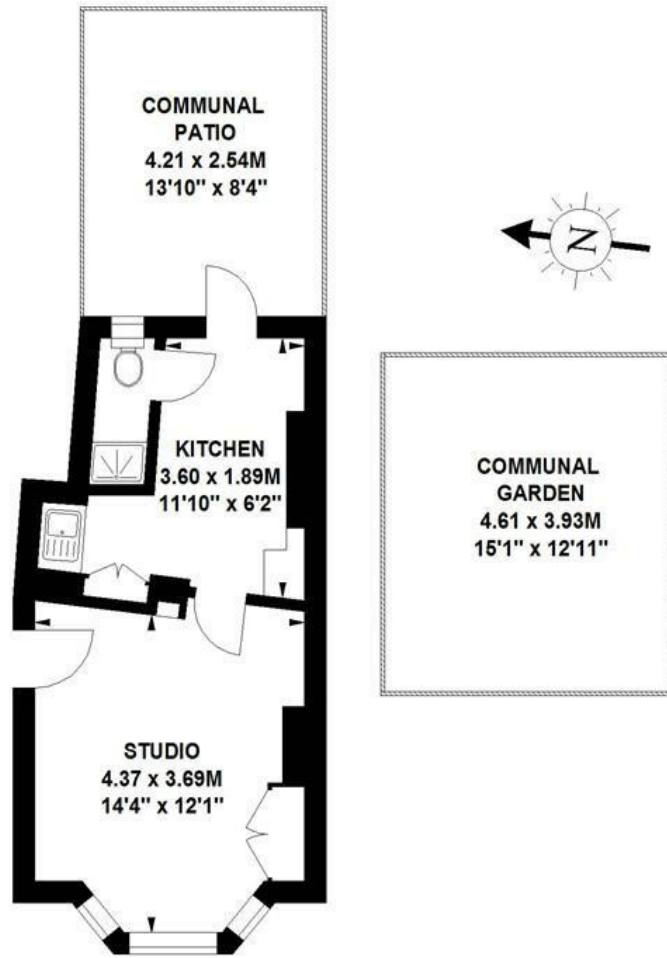
- Delightful residential road
- Nicely presented Studio apartment
- Great for transport links
- Open plan studio room
- Separate fitted kitchen
- Shower Room with WC
- Shared patio area
- Offered part furnished
- Available 12th August

£1,350 Per Calendar Month

Upham Park Road, W4

Approximate gross internal area

27.03 sq m / 291 sq ft

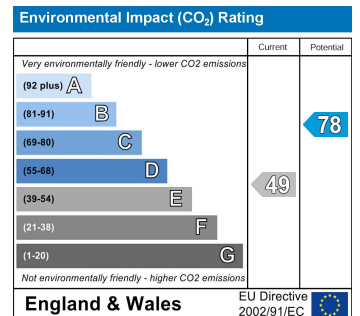
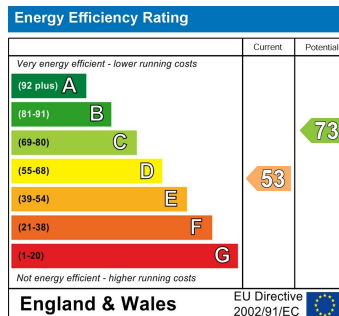


Ground Floor

The floor plan is not to scale and measurements and areas shown are approximate and therefore should be used for illustrative purposes only. The plan has been prepared in accordance with the RICS code of Measuring Practice and whilst we have confidence in the information produced, it must not be relied on.

If there is any aspect of particular importance, you should carry out or commission your own inspection of the property.

Copyright of FeaturePRO.



5-7 Turnham Green Terrace, Chiswick, London, W4 1RG

Tel 020 8747 8800

E-mail lettings@whitmanandco.com

Website www.whitmanandco.com



MISREPRESENTATION ACT 1967

Whitman & Co. for themselves and for the vendors give notice that these particulars do not constitute any part of, an offer of contract. All statements contained in these particulars are made without responsibility on the part of Whitman & Co. or the vendor. None of the statements contained in these particulars is to be relied upon as statements or representations of facts. Any intending purchaser must satisfy himself by inspection or otherwise as to the correctness of each of the statements contained in these particulars. The vendor does not make or give, and neither Whitman & Co. or any person in their employment has any authority to make or give, any representation or warranty whatever in relation to the property.