



Annandale Road, London, W4 2HE

A nicely presented one bedroomed apartment situated in the very popular residential road just moments from Chiswick's Main High Road with its array of boutique shops and restaurant retailers includes M&S, Waitrose, Sainsbury & Tesco. The accommodation provides: open plan reception room with a galley style fitted kitchen, bedroom, and further study/occasional bedroom, fitted bathroom, wardrobes, entrance hall, gas fired central heating. Local transport links include both Turnham Green & Stamford Brook Tube stations, numerous local bus routes with convenient vehicular access via A4/M4 central London, Heathrow & The West. Hounslow Council Tax Band D. EPC-D. The property is offered part furnished and available now

- Lovely central Chiswick Location
- Great for transport links
- Period conversion
- Open plan Living area with galley kitchen
- Main bedroom with fitted wardrobes
- Second occasional bedroom/study
- Fitted bathroom
- Available now
- Part furnished

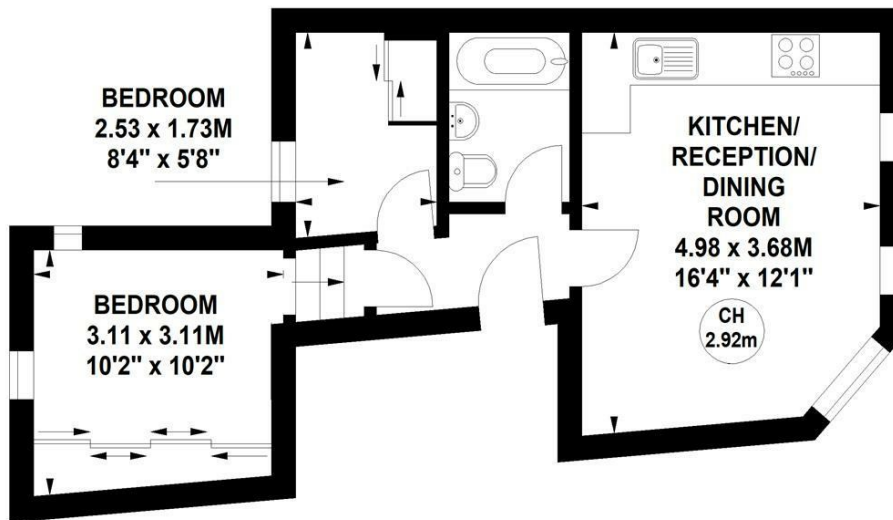
£1,750 Per Calendar Month

Annandale Road, W4

Approximate gross internal area

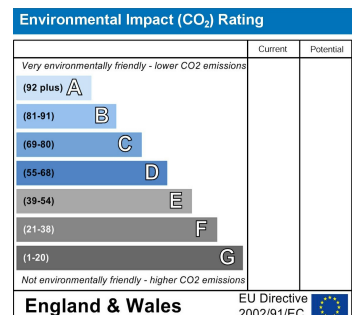
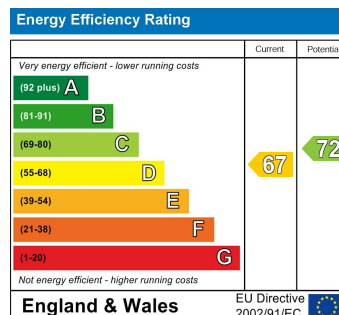
38.55 sq m / 415 sq ft

Key :
CH - Ceiling Height



First Floor

Not to scale, for guidance only and must not be relied upon as a statement of fact.
All measurements and areas are approximate only



5-7 Turnham Green Terrace, Chiswick, London, W4 1RG

Tel 020 8747 8800

E-mail lettings@whitmanandco.com

Website www.whitmanandco.com

PrimeLocation.com

Zoopla.co.uk

rightmove

OnTheMarket.com