



Chiswick High Road, London, W4 1SY

A well presented 804sq ft two double bed roomed second-floor apartment ideally situated on Chiswick High Road with its array of boutique shops, restaurants and bars. The accommodation provides: spacious and bright 16'7"x12'5" reception with adjoining fully fitted kitchen, master double bedroom with fitted wardrobes and tiled shower ensuite, further double bedroom with fitted wardrobes, family bathroom with shower over bath, hallway storage, gas fired central heating, double glazing, private secure gated parking space, lift access. Local transport links include both Turnham Green & Stamford Brook tube stations, numerous local bus routes with convenient vehicular access via A4/M4 Central London, Heathrow & The West. Hounslow Council Band: F. EPC: C. The property is available 20th January 2026 and is offered part furnished.

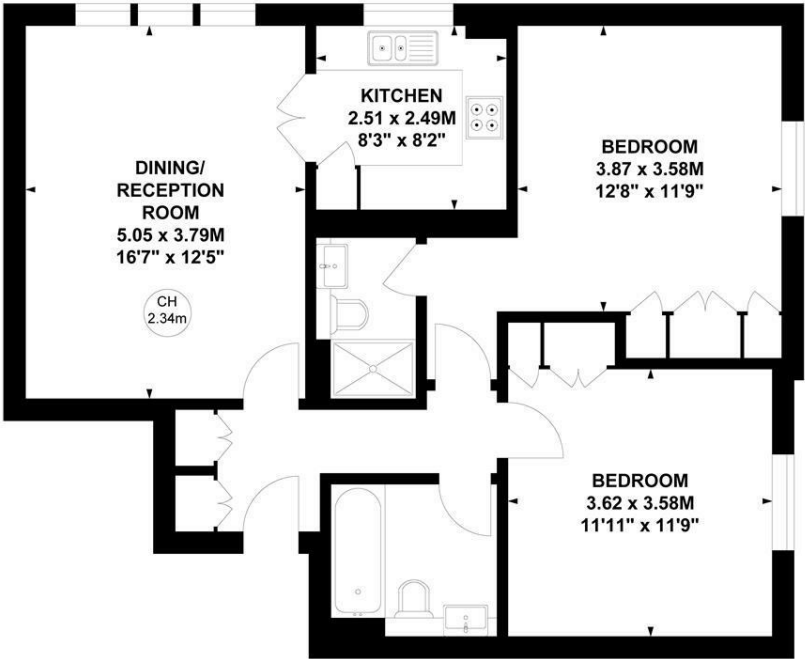
- Spacious 804sq ft flat
- Two double bedrooms with fitted wardrobes
- Family bathroom & master en-suite
- Excellent Chiswick High Road location
- Private secure gated parking
- Impressive 16'7"x12'5" reception room
- Double glazed throughout
- Fully fitted kitchen
- Offered part furnished
- Available 20th January 2026

£2,495 Per Calendar Month

Blandford House, W4

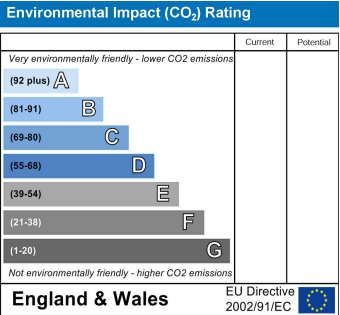
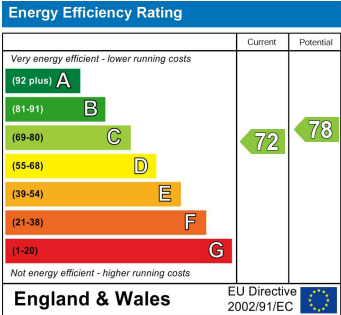
Approximate gross internal area
74.74 sq m / 804 sq ft

Key :
CH - Ceiling Height



Second Floor

Not to scale, for guidance only and must not be relied upon as a statement of fact.
All measurements and areas are approximate only



5-7 Turnham Green Terrace, Chiswick, London, W4 1RG
Tel 020 8747 8800
E-mail lettings@whitmanandco.com
Website www.whitmanandco.com