



Emlyn Road, London, W12 9TF

NEW CARPETS & FRESHLY PAINTED - A well proportioned one double bedroom flat set within a lovely period conversion of four separate units. Ideally located on this prestigious residential road it is only a short walk from Chiswick High Road with its numerous boutique shops, restaurants and bars. Accommodation provides: Impressive communal entrance hall, large reception room, double bedroom with built in wardrobe, tiled family bathroom with shower over bath, fitted kitchen. Local transport links include Stamford Brook & Turnham Green tube station, numerous local bus routes with convenient vehicular access via A4/M4 central London, Heathrow & The West. Hammersmith & Fulham Tax Band C. EPC-D. The property is unfurnished and is available now.

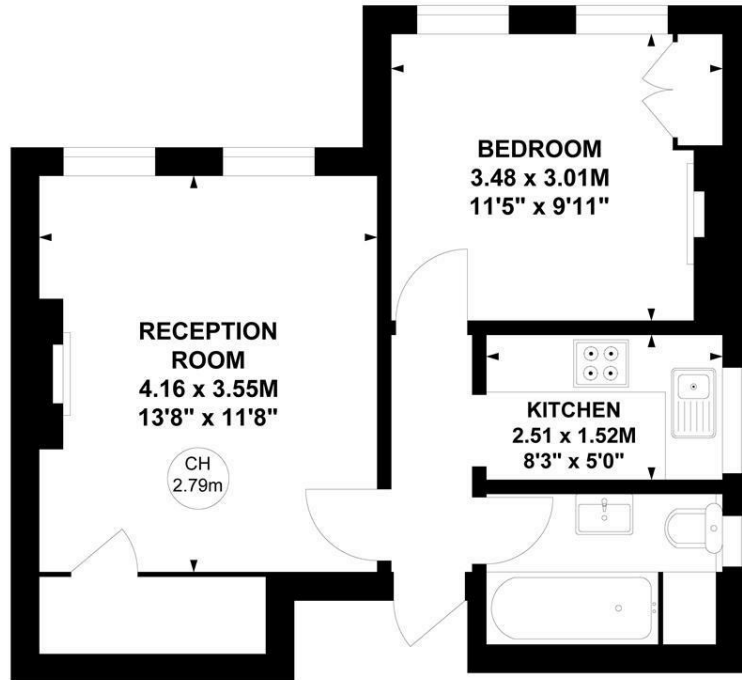
£1,600 Per Calendar Month

- Available Now
- One double bedroom flat
- New carpets
- Freshly painted
- Impressive communal entrance hall
- Prestigious residential road
- Gas central heating
- Hammersmith & Fulham Tax Band C

Emlyn Road, W12

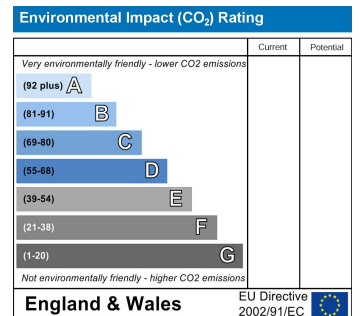
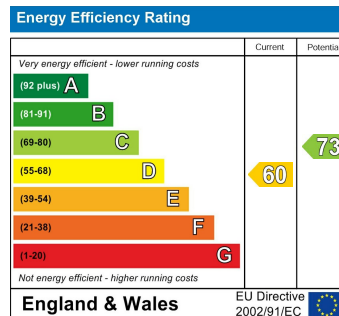
Approximate gross internal area
38.98 sq m / 420 sq ft

Key :
CH - Ceiling Height



First Floor

Not to scale, for guidance only and must not be relied upon as a statement of fact.
All measurements and areas are approximate only



5-7 Turnham Green Terrace, Chiswick, London, W4 1RG

Tel 020 8747 8800

E-mail lettings@whitmanandco.com

Website www.whitmanandco.com

PrimeLocation.com

zoopla.co.uk

rightmove

onTheMarket.com

MISREPRESENTATION ACT 1967

Whitman & Co. for themselves and for the vendors give notice that these particulars do not constitute any part of, an offer of contract. All statements contained in these particulars are made without responsibility on the part of Whitman & Co. or the vendor. None of the statements contained in these particulars is to be relied upon as statements or representations of facts. Any intending purchaser must satisfy himself by inspection or otherwise as to the correctness of each of the statements contained in these particulars. The vendor does not make or give, and neither Whitman & Co. or any person in their employment has any authority to make or give, any representation or warranty whatever in relation to the property.