



## Chiswick High Road, London, W4 1PP

A spacious three double bedroomed maisonette situated in the heart of Chiswick's main high road with its array of boutique shops, wine bars and restaurants. Apartments of this size and nature rarely are available. Accommodation provides: Spacious dual aspect open plan reception room with newly fitted kitchen/dining room. Large roof terrace with impressive far reaching views. Master bedroom with en-suite bathroom, two further double bedrooms with a family bathroom and additional shower room. Gas fired central heating throughout. 1494 sq ft of living space over three floors within 2 minutes of Turnham Green tube station. Numerous local bus routes and convenient vehicular access via A4/M4 Central London, Heathrow & The West. Hounslow Council Band E. EPC: C. The property is offered part furnished and is available 31st January 2026

**£3,250 Per Calendar Month**

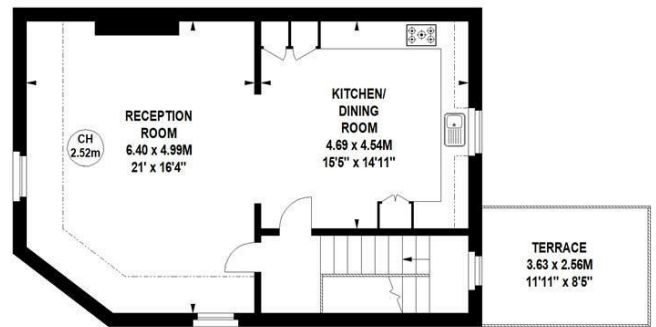
- Three Double Bedrooms
- Three Bathrooms
- Large Open Plan Living Space
- Roof Terrace with Impressive Views
- Wet Room Shower
- Master Bedroom with En-suite
- Part Furnished
- Available 31st January 2026

## Chiswick High Road, W4

Approximate gross internal area  
138.79 sq m / 1494 sq ft

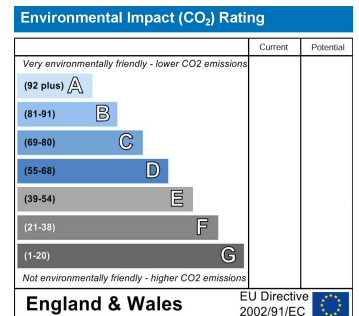
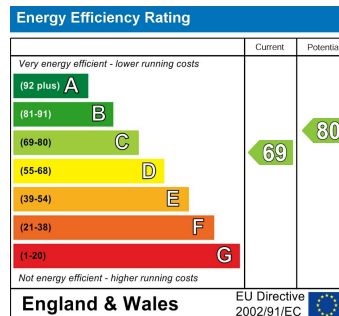


Second Floor



Third Floor

Not to scale, for guidance only and must not be relied upon as a statement of fact.  
All measurements and areas are approximate only



5-7 Turnham Green Terrace, Chiswick, London, W4 1RG

Tel 020 8747 8800

E-mail [lettings@whitmanandco.com](mailto:lettings@whitmanandco.com)

Website [www.whitmanandco.com](http://www.whitmanandco.com)



MISREPRESENTATION ACT 1967

Whitman & Co. for themselves and for the vendors give notice that these particulars do not constitute any part of, an offer of contract. All statements contained in these particulars are made without responsibility on the part of Whitman & Co. or the vendor. None of the statements contained in these particulars is to be relied upon as statements or representations of facts. Any intending purchaser must satisfy himself by inspection or otherwise as to the correctness of each of the statements contained in these particulars. The vendor does not make or give, and neither Whitman & Co. or any person in their employment has any authority to make or give, any representation or warranty whatever in relation to the property.