



Grange Road, London, W4 4DA

A beautiful larger than average one bedroom apartment presented over two levels on a tree-lined street within this impressive Victorian residence. Offering expansive open plan living space situated in a central location in the heart of Chiswick, within a short walk of Gunnersbury Tube Station, moments from Chiswick High Road with its array of boutique shops and restaurants; local shopping includes M&S, Waitrose, Sainsbury & Tesco. Accommodation provides 20'5 x 13'9 open plan living room, two large windows to front, 23'11 x 9'9 kitchen/dining area, stairs to upper-level double bedroom with high ceilings and custom-built wardrobes, memory foam mattress, bathroom with bath tub and shower, entrance corridor, extensive storage cupboards, gas central heating boiler. CPZ Parking. Tube Stations; Gunnersbury (District/Overground), Turnham Green (Piccadilly), Kew Bridge (Rail) & numerous local bus routes including direct busses to Hammersmith, Shepherds Bush & White City. Chiswick Cycle Superhighway. Road access to central London via (A4), Heathrow & the West (M4), (M25), Oxford (A40) and Portsmouth (A3). Offered furnished and available Mid January 2026.

- Bright and Spacious split-level apartment
- Beautifully presented and recently refurbished
- Great for transport links and amenities
- 20'5 x 13'9 open plan living room
- 23'11 x 9'9 kitchen/dining area
- Double bedroom with memory foam mattress
- Bathroom with bath & shower
- Custom wardrobes & extensive storage cupboards
- Gas central heating boiler
- Furnished and available Mid January 2026

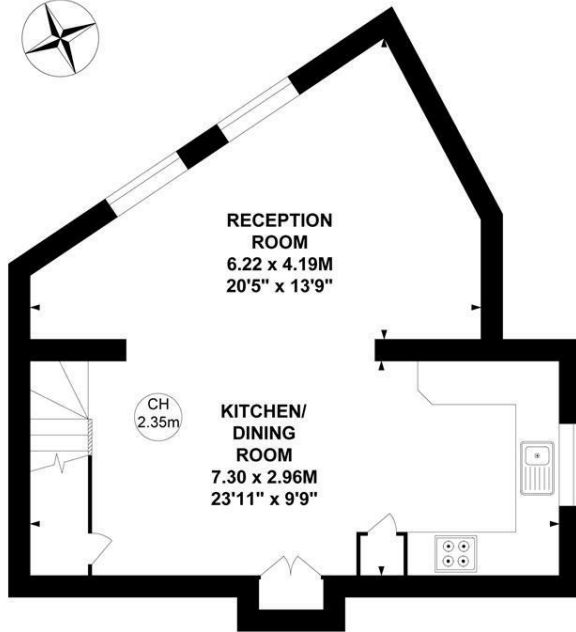
£1,900 Per Calendar Month

Grange Road, W4

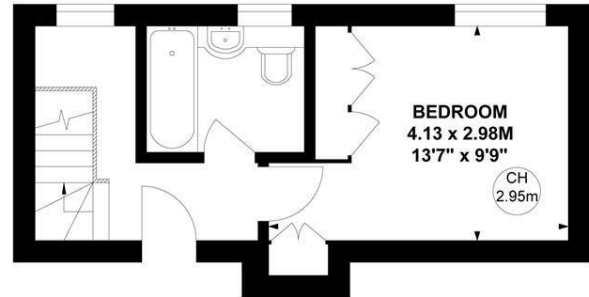
Approximate Gross Internal Area
62.24 sq m / 670 sq ft



Key :
CH - Ceiling Height

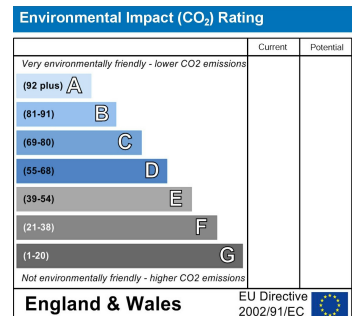
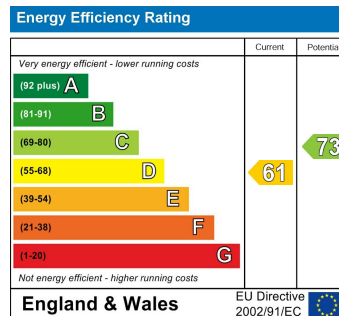


Ground Floor



First Floor

Not to scale, for guidance only and must not be relied upon as a statement of fact.
All measurements and areas are approximate only



5-7 Turnham Green Terrace, Chiswick, London, W4 1RG

Tel 020 8747 8800

E-mail lettings@whitmanandco.com

Website www.whitmanandco.com

PrimeLocation.com

zoopla.co.uk

rightmove

onTheMarket.com

MISREPRESENTATION ACT 1967

Whitman & Co. for themselves and for the vendors give notice that these particulars do not constitute any part of, an offer of contract. All statements contained in these particulars are made without responsibility on the part of Whitman & Co. or the vendor. None of the statements contained in these particulars is to be relied upon as statements or representations of facts. Any intending purchaser must satisfy himself by inspection or otherwise as to the correctness of each of the statements contained in these particulars. The vendor does not make or give, and neither Whitman & Co. or any person in their employment has any authority to make or give, any representation or warranty whatever in relation to the property.