



Spring Grove, London, W4  
Guide Price £1,100,000

**WHITMAN & CO.**

SALES · LETTINGS · COMMERCIAL





A charming three-bedroom period family house ideally located in the sought after Strand on the Green area, just a stones throw from the river Thames and within the catchment of the highly regarded Strand on the Green primary school.

The property features a master bedroom with an ensuite, two further double bedrooms, a luxury Fired Earth bathroom, two reception rooms, a fully-fitted John Lewis kitchen/breakfast room, and a 75' landscaped garden with summer house.

Ideally situated for a riverside walk, with historic pubs along this picturesque stretch of the Thames, while Chiswick High Road and Kew Gardens are also nearby. Kew Bridge (national rail) and Gunnersbury (underground) provide excellent transport connections, with the A4/M4 and A316 close at hand for motorists. No onward chain.





# Spring Grove, W4

Approximate gross internal area

123.80 sq m / 1333 sq ft

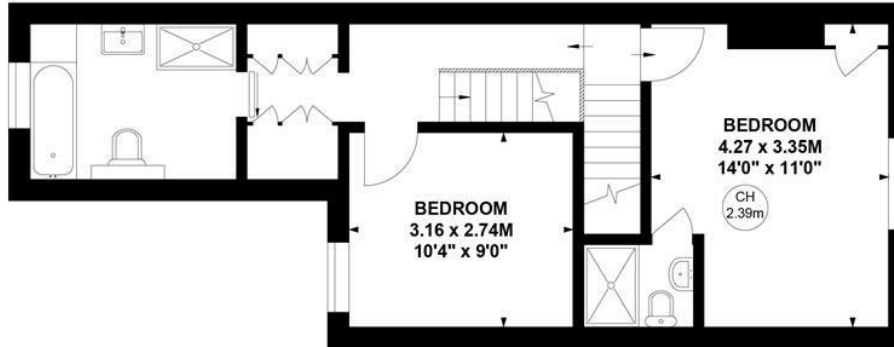
(Including Shed & Eaves Storage)

Shed : 6.49 sq m / 70 sq ft

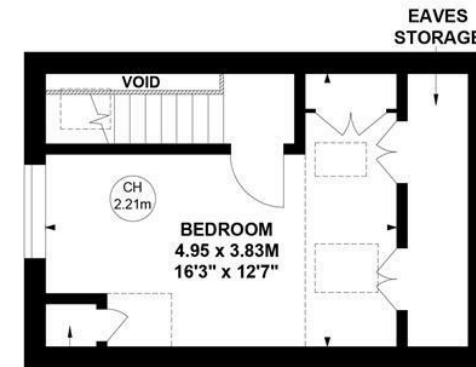
Eaves Storage : 3.74 sq m / 40 sq ft

Key :

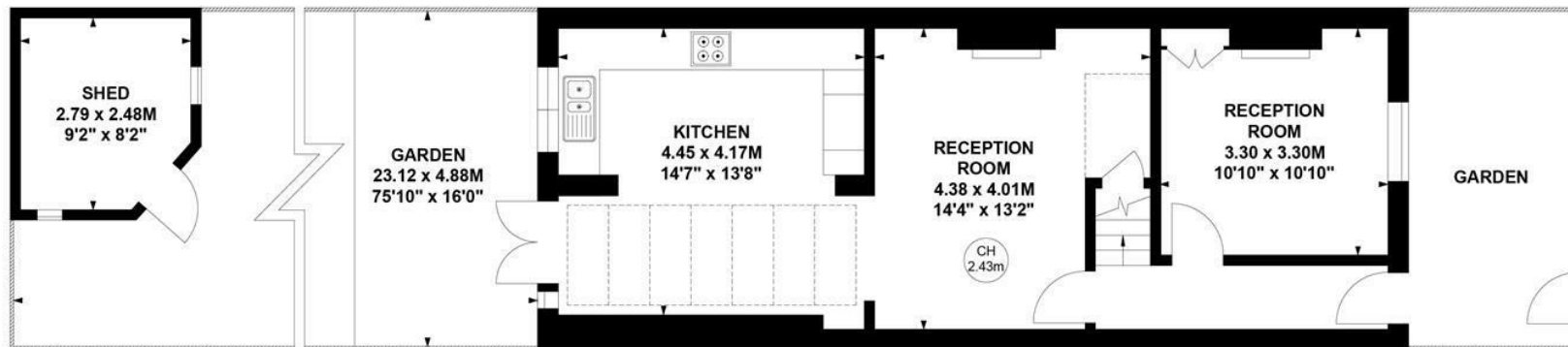
CH - Ceiling Height



First Floor



Second Floor



Ground Floor

Not to scale, for guidance only and must not be relied upon as a statement of fact.

All measurements and areas are approximate only

- Ideally located next to the Thames
- Large landscaped back garden
- Two reception rooms

- Summer house
- Luxury bathroom
- No onward chain

Tenure - Freehold  
Local Authority - Hounslow  
Council Tax - Band F



