



## 3 Annandale Road, W4 2HE

A beautifully presented two bedroomed apartment situated in this very popular residential area just moments from Chiswick High Road with its array of boutique shops and restaurants, main retailers include M&S, Waitrose, Sainsbury & Tesco. The accommodation provides: living room with a feature bay window to front galley style fitted kitchen, two bedrooms, fitted luxury bathroom, entrance hall with fitted cupboard, gas fired central heating. Local transport links include Turnham Green and Stamford Brook tube stations numerous local bus routes with convenient vehicular access via A4/M4 central London, Heathrow & The West. EPC-D. Hounslow Council Band D. The property is offered furnished and is available 16th January 2026

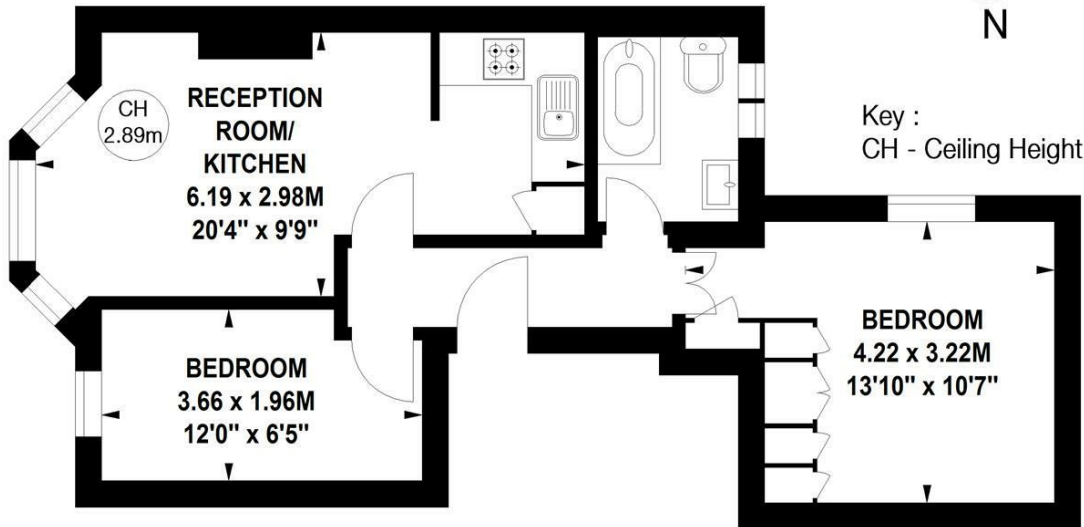
- Lovely central Chiswick location
- Very nicely presented
- Period conversion apartment
- Great for transport links
- Living room with feature bay window
- Fitted kitchen
- Two bedrooms
- Luxury bathroom
- Offered furnished
- Available 16th January 2026

**£2,000 Per Calendar Month**

# Annandale Road, W4

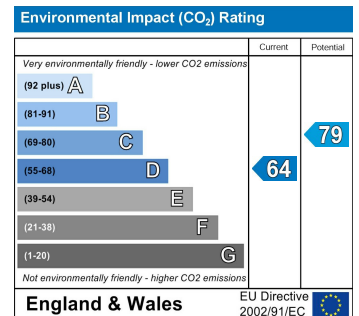
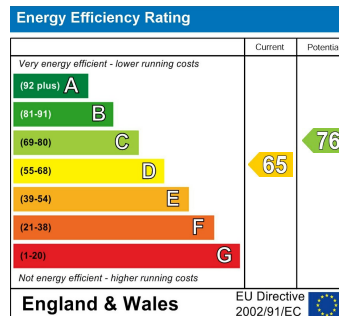
Approximate gross internal area

43.20 sq m / 465 sq ft



## First Floor

Not to scale, for guidance only and must not be relied upon as a statement of fact.  
All measurements and areas are approximate only



5-7 Turnham Green Terrace, Chiswick, London, W4 1RG

Tel 020 8747 8800

E-mail [lettings@whitmanandco.com](mailto:lettings@whitmanandco.com)

Website [www.whitmanandco.com](http://www.whitmanandco.com)

PrimeLocation.com

Zoopla.co.uk

rightmove

onTheMarket.com