



## Kent Road, London, W4 5EY

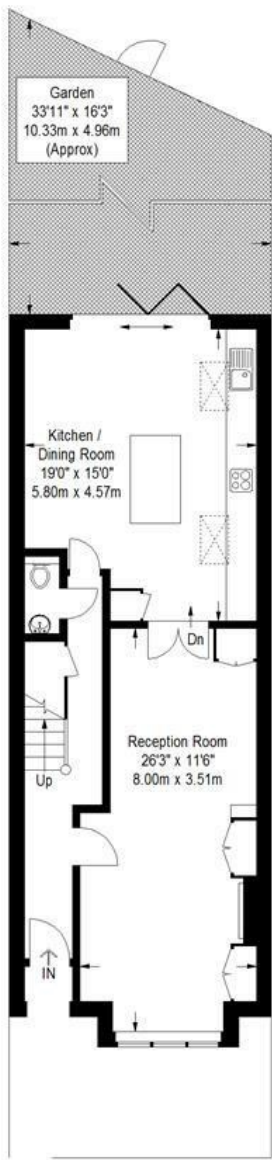
A very nicely presented four bedroomed period family home situated in this very popular residential area, local convenience stores are close to hand whilst within walking distance the more extensive facilities of Chiswick High Road with its array of boutique shops and restaurants. Accommodation provides: spacious open plan through reception room with wooden flooring, fitted kitchen/breakfast room boasting high-end appliances including a Quooker hot tap, underfloor heating and bi-folding doors lead to a delightfully landscaped garden. Four double bedrooms, luxury family bathroom plus en-suite, gas-fired central heating and Sonos music system with ceiling speakers throughout the ground floor. Local transport links include both Chiswick Park and Turnham Green Tube Stations, numerous local bus routes with convenient vehicular access via A4/M4 central London, Heathrow & The West. Ealing council tax band: F. EPC: C. The property is offered unfurnished and is available 5th January.

- Four double bedrooms
- Two bathrooms
- Underfloor heating
- Bi-folding doors
- Quooker hot tap
- Landscaped garden
- Unfurnished
- Available 5th January

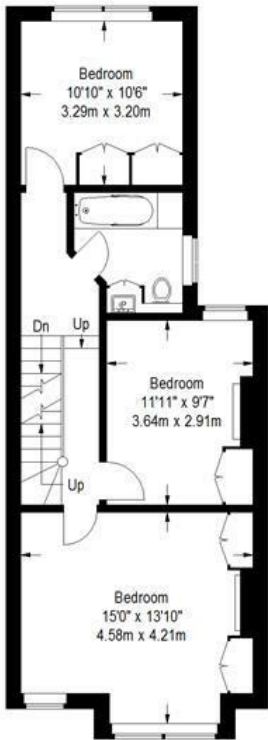
**£4,200 Per Calendar Month**

Kent Road, Chiswick W4 5EY

Approximate Gross Internal Area  
Ground Floor = 62 sq m / 667 sq ft  
First Floor = 54 sq m / 581 sq ft  
Second Floor (Excluding Eaves Storage) = 25 sq m / 269 sq ft  
Total = 141 sq m / 1517 sq ft

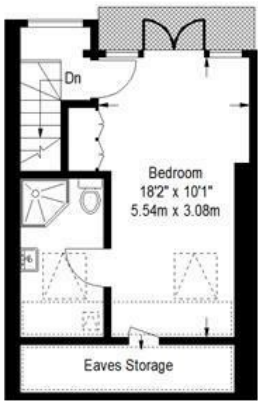


Ground Floor



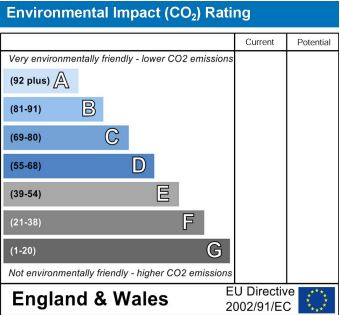
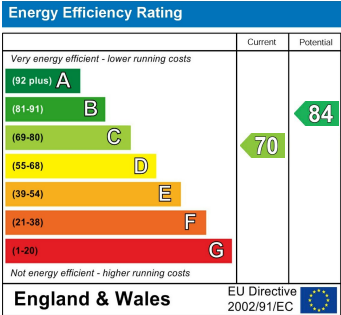
First Floor

Reduced headroom  
below 1.5 m / 5'0"



Second Floor

Measured in accordance with RICS guidelines. To be used for identification and guidance purposes only. Not to scale.  
© Photos Plans and EPCs | Tel: 07774 688 771 | info@photosplansandepcs.com | www.photosplansandepcs.com (ID 82325)



5-7 Turnham Green Terrace, Chiswick, London, W4 1RG  
Tel 020 8747 8800  
E-mail [lettings@whitmanandco.com](mailto:lettings@whitmanandco.com)  
Website [www.whitmanandco.com](http://www.whitmanandco.com)