



Heathfield Terrace, W4 4JE

A fabulous two bedroomed penthouse apartment set within this historic grade II listed building. Situated within the heart of central Chiswick overlooking the open spaces of Turnham Green, within a short stroll of Chiswick High Road with its array of boutique shops, numerous restaurants, eating house and local bars. The accommodation provides: large open plan living room with views across Turnham Green and beyond, vaulted ceilings and skylights, lovely bespoke kitchen dining room with views, two double bedrooms, luxury bathroom and further en-suite shower room to the main bedroom, entrance is at first floor level with flighted staircase to the living floor, wood flooring to main living areas, underfloor heating. Local transport links include Turnham green and Chiswick Park tube stations Numerous local bus routes with convenient vehicular access via A4/M4 central London, Heathrow & The West. Hounslow Council Band F, EPC-C. Offered as unfurnished and available 2nd December.

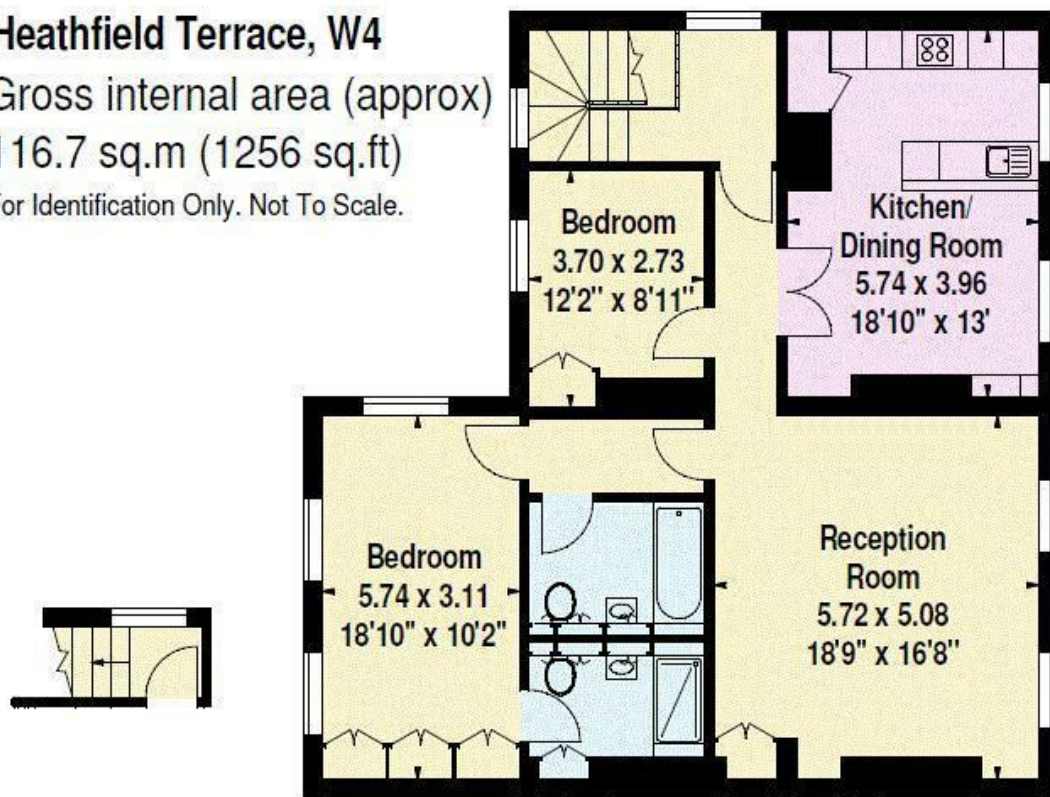
- Beautiful two bedroomed penthouse
- Set within Grade II listed building
- Fabulous views over Turnham Green
- Spacious living area with vaulted ceilings
- Bespoke fitted kitchen/dining Room
- Two double bedrooms
- Luxury bathroom & En-suite shower room
- Designated parking space
- Underfloor heating throughout
- Available 2nd December, unfurnished

£3,650 Per Month

Heathfield Terrace, W4

Gross internal area (approx)
116.7 sq.m (1256 sq.ft)

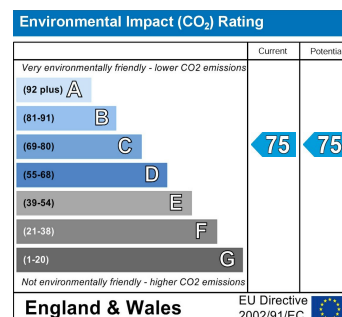
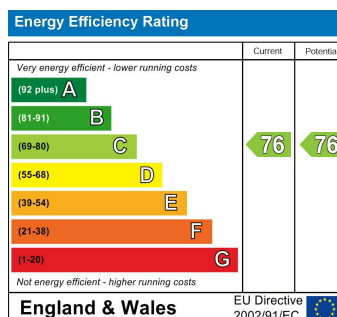
For Identification Only. Not To Scale.



First Floor

Second Floor

Measurements taken from architect's plans



5-7 Turnham Green Terrace, Chiswick, London, W4 1RG

Tel 020 8747 8800

E-mail lettings@whitmanandco.com

Website www.whitmanandco.com

PrimeLocation.com

Zoopla.co.uk

rightmove

OnTheMarket.com