



Reckitt Road, London, W4 2BT

Guide Price £1,200,000

WHITMAN & CO.

SALES · LETTINGS · COMMERCIAL

- Located in the sought after 'Glebe Estate'
- Private 24' garden
- 23' Through Reception room
- Huge potential STPP
- Fantastic transport links
- No onward chain

Tenure - Freehold
Local Authority - Hounslow
Council Tax - F

Reckitt Road, W4

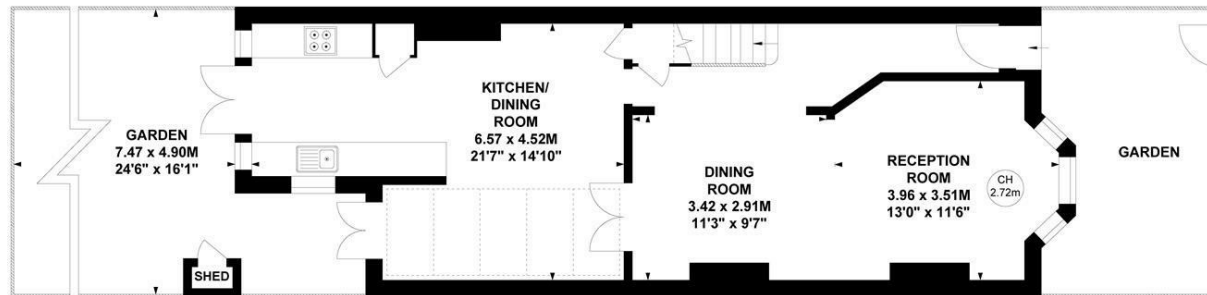
Approximate gross internal area

101.11 sq m / 1088 sq ft

Key :
CH - Ceiling Height



First Floor



Ground Floor

Not to scale, for guidance only and must not be relied upon as a statement of fact.

All measurements and areas are approximate only

THE PROPERTY

A charming well presented period cottage ideally located in the highly sought-after Glebe Estate offering an excellent balance of living and entertaining space in this central Chiswick location. Two double bedrooms, Luxury bathroom, Large loft, 23' Through reception room, 21' Hand-built Harvey Jones Kitchen/Breakfast room, Private 24' landscaped garden, Ideally situated within close proximity of Turnham Green Tube Station and the extensive range of shops, bars and restaurants.

SITUATION



5-7 Turnham Green Terrace, Chiswick, London, W4 1RG

Tel 020 8747 8800

E-mail sales@whitmanandco.com

Website www.whitmanandco.com