



Duke Road, London, W4 2BA

A recently updated 1348 sq ft four bedroomed Victorian home situated in the very popular "Glebe Estate" area in the heart of Chiswick just moments from Chiswick High Road with its array of boutique shops and restaurants. The accommodation provides: 25'2" open plan dining to reception living area with a bay window to front and feature fire places, fitted galley kitchen with dining space and bi-fold doors to a private rear paved garden. First floor boasts an impressive master bedroom with feature bay window and built in wardrobes, two further bedrooms and a family en-suite tiled bathroom. The second floor has an additional bedroom with eaves storage or ideal study space. Gas fired central heating. Local transport links include both Turnham Green & Chiswick Park tube stations, numerous local bus routes with convenient vehicular access via A4/M4 Central London, Heathrow & The West. Hounslow Council Tax Band F. EPC ?. The house is offered unfurnished and available immediately

- Four bedroom Victorian house
- Popular Glebe Street location
- 25'2" open plan reception to dining room
- Private paved rear garden
- Tiled family bathroom
- Fitted galley kitchen with dining space
- Wood flooring
- EPC-?
- Unfurnished
- Available now

£3,750 Per Calendar Month

Duke Road, W4

Approximate gross internal area

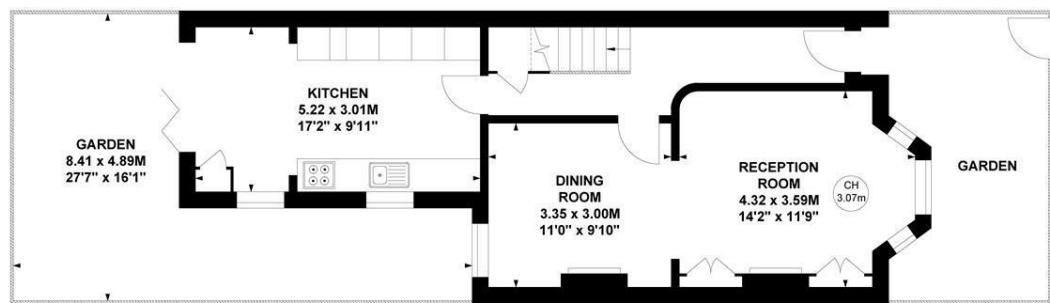
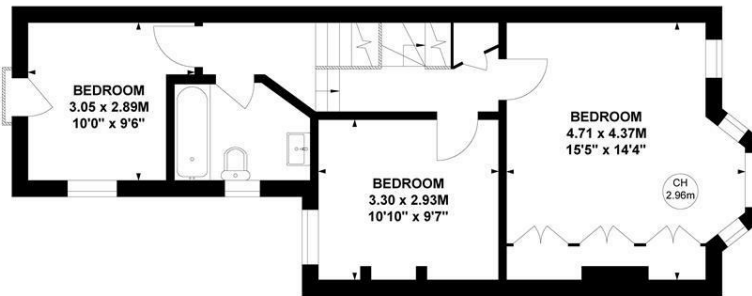
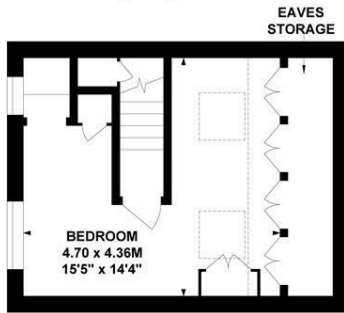
125.25 sq m / 1348 sq ft

(Including Eaves Storage)

Eaves Storage : 3.58 sq m / 39 sq ft

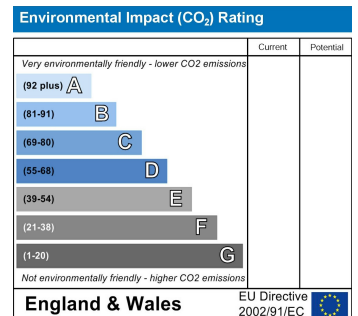
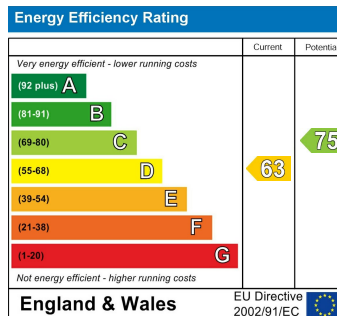
Key :

CH - Ceiling Height



Not to scale, for guidance only and must not be relied upon as a statement of fact.

All measurements and areas are approximate only



5-7 Turnham Green Terrace, Chiswick, London, W4 1RG

Tel 020 8747 8800

E-mail lettings@whitmanandco.com

Website www.whitmanandco.com



MISREPRESENTATION ACT 1967

Whitman & Co. for themselves and for the vendors give notice that these particulars do not constitute any part of, an offer of contract. All statements contained in these particulars are made without responsibility on the part of Whitman & Co. or the vendor. None of the statements contained in these particulars is to be relied upon as statements or representations of facts. Any intending purchaser must satisfy himself by inspection or otherwise as to the correctness of each of the statements contained in these particulars. The vendor does not make or give, and neither Whitman & Co. or any person in their employment has any authority to make or give, any representation or warranty whatever in relation to the property.