



Berrymede Road, Chiswick, W4 5JE

A lovely split level one bedroomed apartment situated in this popular residential road. Local stores and newsagents are within a short walk whilst further afield are the more extensive boutique shopping and restaurants along Chiswick High Road. Accommodation provides: double bedroom with built in wardrobes, open plan living room with fully fitted galley style kitchen, tiled bathroom, gas fired central heating and wood flooring. Local transport links include Chiswick Park & Turnham Green Tube stations, Acton mainline station and numerous local bus routes with convenient access via A4/M4 to Central London, Heathrow and the West. Ealing Council Band C. EPC C. The property is offered as furnished and available now.

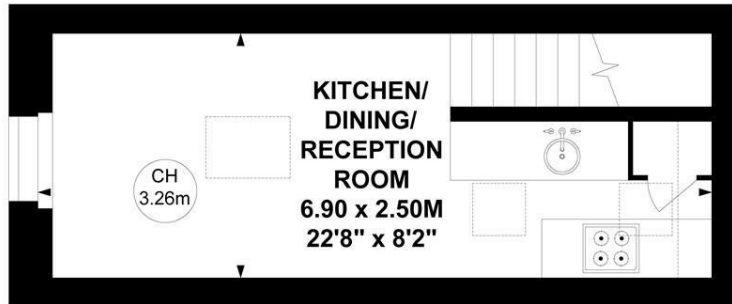
- One double bedroom
- Split level flat
- Wood flooring
- Gas fired central heating
- Double glazing
- EPC-C
- Available now

£1,675 Per Calendar Month

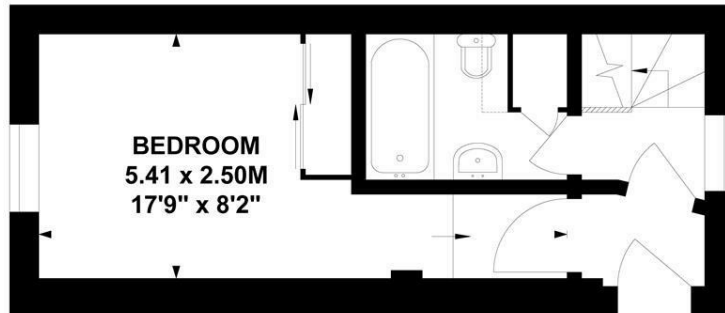
Berrymede Road, W4

Approximate gross internal area
34.01 sq m / 366 sq ft

Key :
CH - Ceiling Height

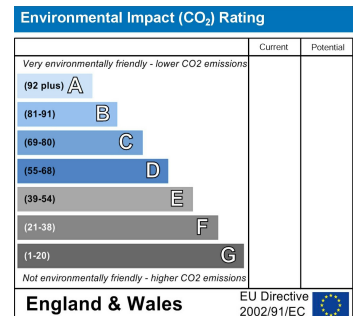
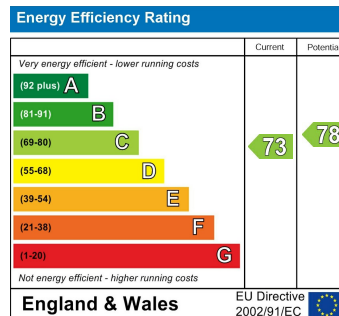


First Floor



Raised Ground Floor

Not to scale, for guidance only and must not be relied upon as a statement of fact.
All measurements and areas are approximate only



5-7 Turnham Green Terrace, Chiswick, London, W4 1RG

Tel 020 8747 8800

E-mail lettings@whitmanandco.com

Website www.whitmanandco.com

PrimeLocation.com

Zoopla.co.uk

rightmove

OnTheMarket.com