



Devonshire Gardens, London, W4
Guide Price £2,500,000

WHITMAN & CO.

SALES · LETTINGS · COMMERCIAL



A rare opportunity to acquire this substantial five-bedroom semi-detached period home offering 3,361 sq ft of versatile accommodation, a generous 110' x 38' south-facing garden, and off-street parking for several cars. Ideally located on this prestigious residential road in Grove Park. The property offers exceptional scope to modernise and personalise, with well-balanced living and entertaining space arranged over three floors. The accommodation comprises a wide entrance hall, 29' x 19' kitchen/dining room with direct garden access, two elegant reception rooms, a cloakroom, an office/bedroom six, four double bedrooms, three bathrooms, and a self-contained top-floor studio with kitchenette, shower room, and built-in storage. Further benefits include a large landscaped garden with outbuilding, driveway parking for multiple vehicles, and potential to extend (STPP). Devonshire Gardens is situated within close proximity of Chiswick Station, the River Thames, Chiswick House and Gardens, and excellent local schools. No onward chain.



Devonshire Gardens, W4

Approximate gross internal area

312.26sq m / 3361 sq ft

(Including Eaves Storage & Outbuilding)

Eaves Storage : 32.50 sq m / 350 sq ft

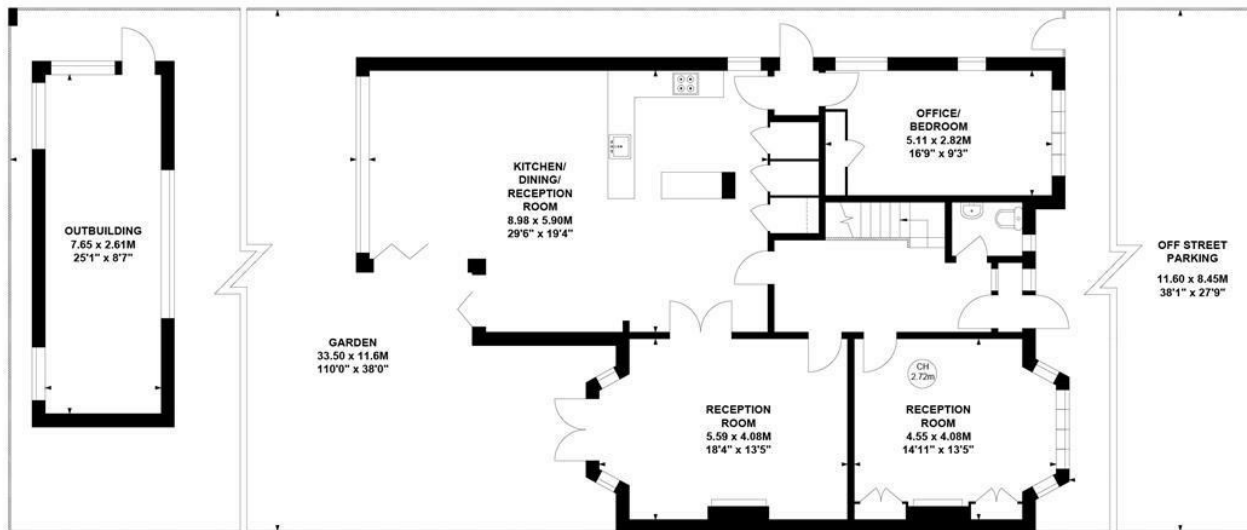
Outbuilding : 19.96 sq m / 215 sq ft

Key :

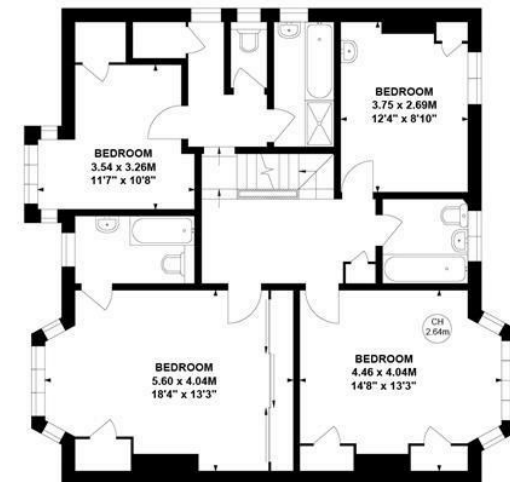
CH - Ceiling Height



Second Floor



Ground Floor



First Floor

Not to scale, for guidance only and must not be relied upon as a statement of fact.

All measurements and areas are approximate only

- Substantial family home of 3361 sqft
- Off street parking for several cars
- Wide tree lined residential road

- 110' South facing garden
- Flexible accommodation over 3 floors
- Grove Park area of Chiswick

Tenure - Freehold
Local Authority - Hounslow
Council Tax - Band G

