



## Braemar Road, Brentford, TW8 0NR

A very nicely presented three bedroomed family home situated in the popular residential road within walking distance of Brentford High Street with its numerous shops, public eating houses, and restaurants combined with pleasant riverside walks along the river Thames. The accommodation provides a large open plan through reception room 26'10x13', fitted kitchen opening onto the living room, three double bedrooms family bathroom and additional separate shower room, private rear garden, CPZ parking, gas-fired central heating. Local transport links include Brentford and Kew bridge mainline stations, numerous local bus routes with convenient vehicular access via A4/M4 central London, Heathrow, and the west. Hounslow Council Tax Band D. EPC E. The property is offered unfurnished and is available 14th September

- Nicely presented family home
- Good for transport links
- Open plan living area
- Fitted kitchen
- Three bedrooms
- Family bathroom
- Further shower room
- 30' Private rear garden
- Available 14th September
- Unfurnished

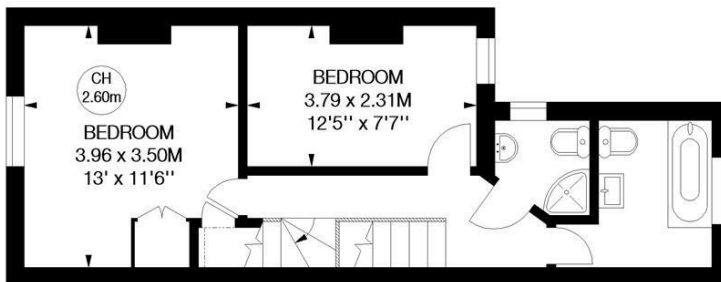
**£2,500 Per Calendar Month**

## Braemar Road, TW8

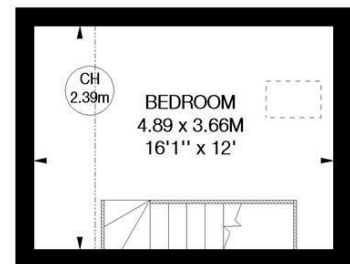
Approximate gross internal area

96.34 sq m / 1037 sq ft

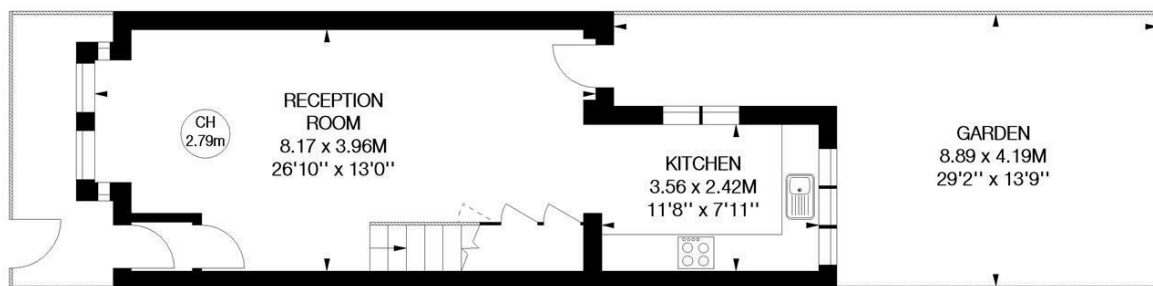
Key :  
CH - Ceiling Height



First Floor

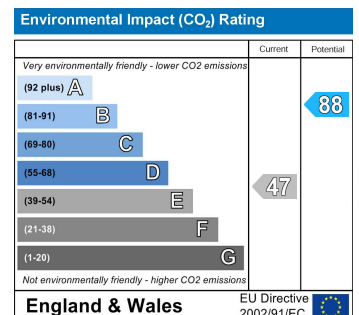
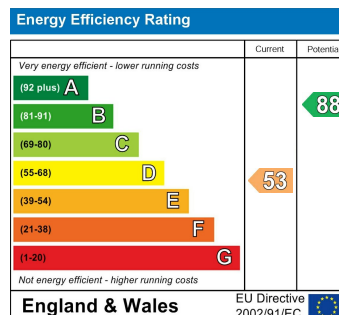


Second Floor



Ground Floor

Not to scale, for guidance only and must not be relied upon as a statement of fact.  
All measurements and areas are approximate only



5-7 Turnham Green Terrace, Chiswick, London, W4 1RG

Tel 020 8747 8800

E-mail [lettings@whitmanandco.com](mailto:lettings@whitmanandco.com)

Website [www.whitmanandco.com](http://www.whitmanandco.com)



MISREPRESENTATION ACT 1967

Whitman & Co. for themselves and for the vendors give notice that these particulars do not constitute any part of, an offer of contract. All statements contained in these particulars are made without responsibility on the part of Whitman & Co. or the vendor. None of the statements contained in these particulars is to be relied upon as statements or representations of facts. Any intending purchaser must satisfy himself by inspection or otherwise as to the correctness of each of the statements contained in these particulars. The vendor does not make or give, and neither Whitman & Co. or any person in their employment has any authority to make or give, any representation or warranty whatever in relation to the property.