



St Catherines Court, W4 1UH

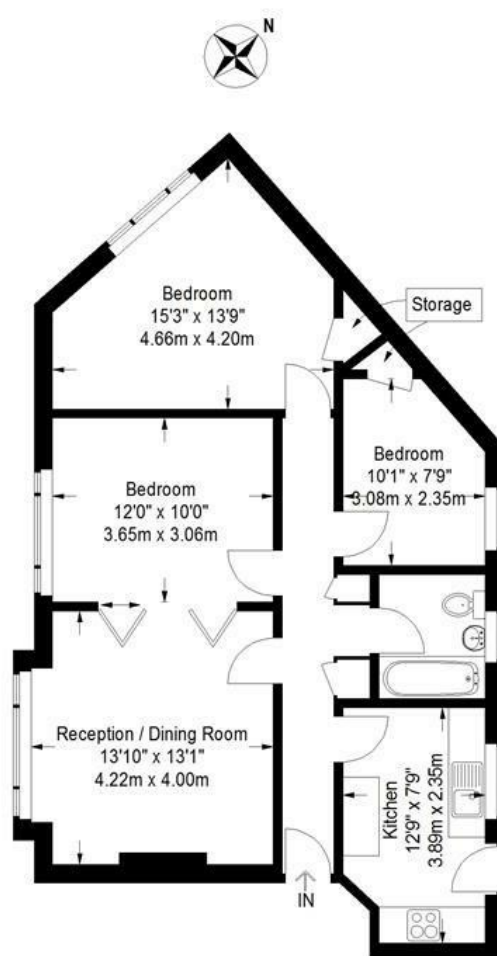
BACKGROUND HEATING & HOT WATER INCLUDED - No sharers due to head lease - A light and spacious second floor three bedroomed apartment situated within this exceptionally popular residential road in the heart of the Bedford Park area within walking distance of both Turnham Green and Chiswick High Road with its array of boutique shops, restaurants, wine bars, and cafes, main retailers include M&S, Waitrose, Sainsbury & Tesco. The accommodation provides spacious reception room, fitted kitchen, three bedrooms, a luxury bathroom, main hallway, communal background heating and hot water, large central communal gardens. Local transport links include Turnham Green & Chiswick Park Tube stations, numerous local bus routes with convenient vehicular access via A4/M4 Central London, Heathrow & The West. EPC-TBC. Ealing Council Band E. The property is offered unfurnished and available now.

- Light and spacious top floor apartment
- Lovely Bedford Park central location
- Great for transport links
- Flexible accommodation
- Fitted kitchen
- Three bedrooms
- Bathroom
- Background heating and hot water
- Central communal gardens
- Available now

£2,500 Per Calendar Month

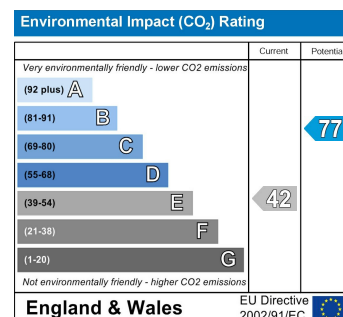
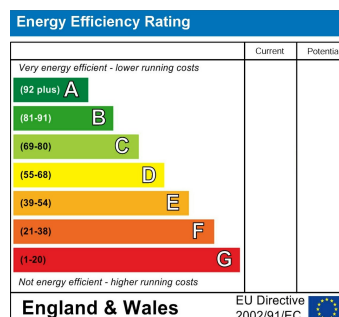
St. Catherines Court, Bedford Road W4 1UH

Approximate Gross Internal Area
73 sq m / 786 sq ft



Second Floor

Measured in accordance with RICS guidelines. To be used for identification and guidance purposes only. Not to scale.
© Photos Plans and EPCs | Tel: 07774 688 771 | info@photosplansandepcs.com | www.photosplansandepcs.com (ID 102198)



5-7 Turnham Green Terrace, Chiswick, London, W4 1RG

Tel 020 8747 8800

E-mail lettings@whitmanandco.com

Website www.whitmanandco.com

PrimeLocation.com

zoopla.co.uk

rightmove

onTheMarket.com