



Cranbrook Road, London, W4 2LH

A very nicely presented three-bedroomed family home situated in this very popular residential road in the heart of central Chiswick just a short walk from Chiswick's Main High Road with its array of boutique shops and restaurants, local retailers include M&S, Waitrose, Sainsbury, and Tesco. The accommodation provides: open plan living area with a feature bay to front, recently fitted kitchen/dining room with cloakroom, dining area, and doors leading onto a private rear garden with a Westerly aspect, three double bedrooms, family bathroom, gas fired central heating. Local transport links include both Turnham Green & Stamford brook tube stations numerous local bus routes with convenient vehicular access Via A4/M4 central London, Heathrow, and The West. Council Tax Band: F. EPC Band: D. The property is offered unfurnished and is available 19th July.

- Period terraced family home
- Located in the heart of central Chiswick
- Great for transport links
- Open plan living area
- Recently fitted kitchen/diner
- Three double bedrooms
- Family bathroom
- Private rear west facing garden
- Available 19th July
- Unfurnished

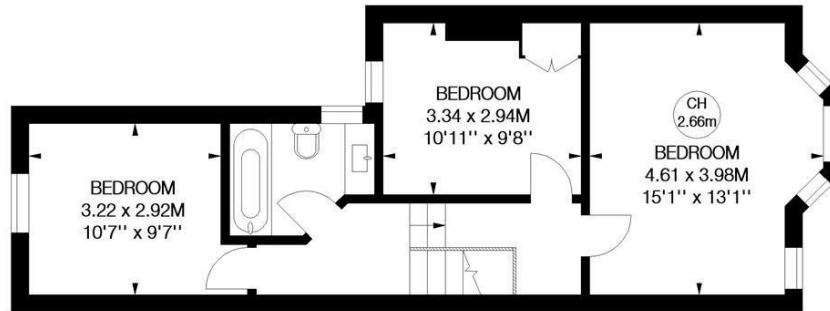
£4,000 Per Calendar Month

Cranbrook Road, W4

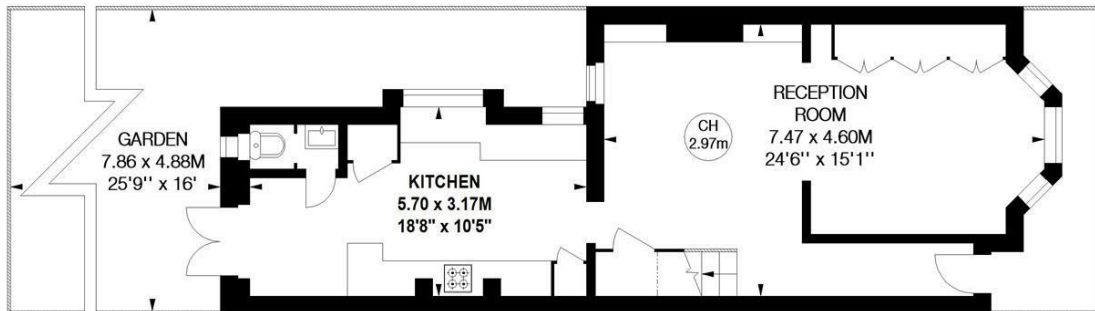
Approximate gross internal area

99.77 sq m / 1074 sq ft

Key :
CH - Ceiling Height

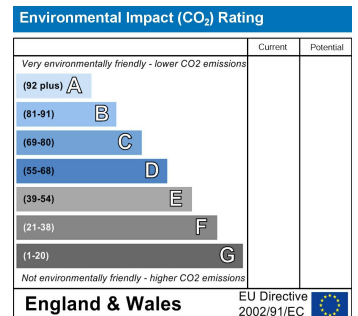
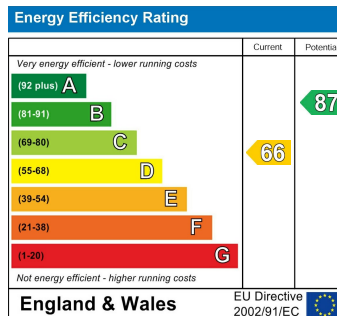


First Floor



Ground Floor

Not to scale, for guidance only and must not be relied upon as a statement of fact.
All measurements and areas are approximate only



5-7 Turnham Green Terrace, Chiswick, London, W4 1RG

Tel 020 8747 8800

E-mail lettings@whitmanandco.com

Website www.whitmanandco.com

PrimeLocation.com

Zoopla.co.uk

rightmove

OnTheMarket.com

MISREPRESENTATION ACT 1967

Whitman & Co. for themselves and for the vendors give notice that these particulars do not constitute any part of, an offer of contract. All statements contained in these particulars are made without responsibility on the part of Whitman & Co. or the vendor. None of the statements contained in these particulars is to be relied upon as statements or representations of facts. Any intending purchaser must satisfy himself by inspection or otherwise as to the correctness of each of the statements contained in these particulars. The vendor does not make or give, and neither Whitman & Co. or any person in their employment has any authority to make or give, any representation or warranty whatever in relation to the property.