



King Street, London, W6 0RX

A nicely presented and bright one double bedroom top floor apartment located just moments from Chiswick High Road with its array of boutique shops and diverse restaurants.

Accommodation provides: a bright and airy 19'7"x14'7" reception room with fitted kitchen and adjoining cupboard with washing machine, hallway storage, 13'1"x9'1" double bedroom with ensuite tiled bathroom, fitted wardrobes, gas fired central heating and communal bike storage area on first floor. Local transport links include: A one minute walk to Stamford Brook tube station & Turnham Green nearby, numerous local bus routes with convenient access via A4/M4 to Central London, Heathrow & The West. No parking permissible. Hammersmith and Fulham Band C, EPC rating C. Offered furnished and available 8th August.

£1,750 Per Calendar Month

- Available 8th August
- Furnished
- Gas fired central heating
- Fitted wardrobes
- EPC C
- Council Tax Band C
- Bright and airy one double bedroom apartment
- One minute walk to Stamford Brook tube station



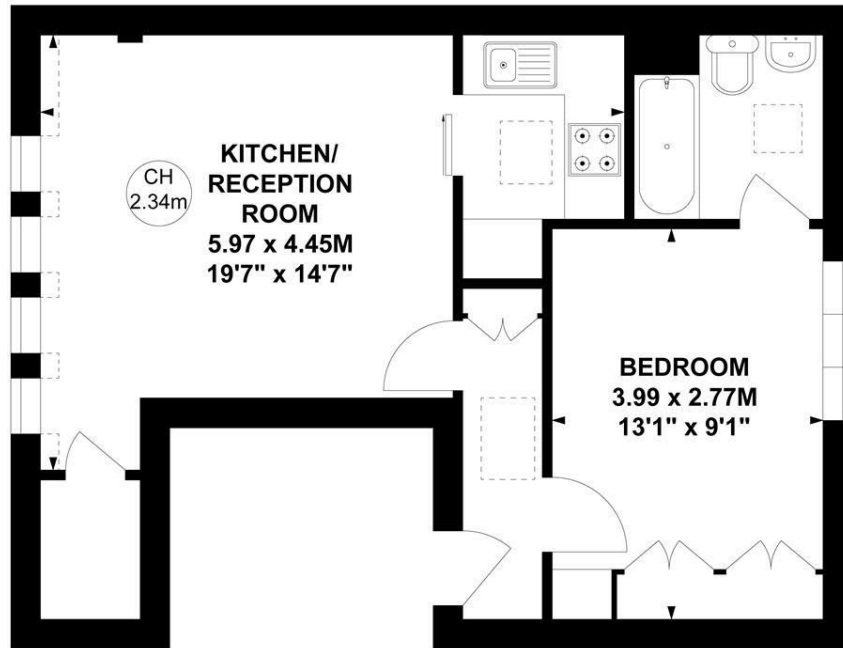
King Street, W6

Approximate gross internal area

40.29 sq m / 434 sq ft

Key :

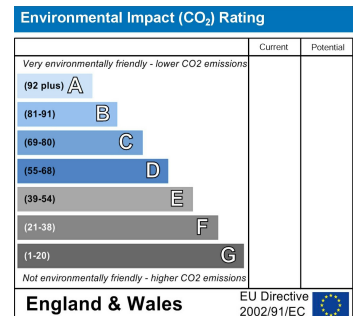
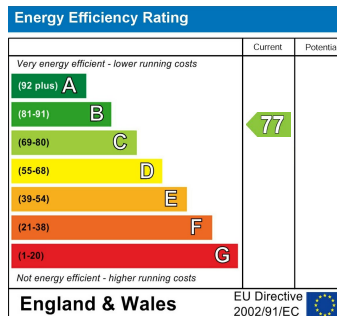
CH - Ceiling Height



Fourth Floor

Not to scale, for guidance only and must not be relied upon as a statement of fact.

All measurements and areas are approximate only



5-7 Turnham Green Terrace, Chiswick, London, W4 1RG

Tel 020 8747 8800

E-mail lettings@whitmanandco.com

Website www.whitmanandco.com

PrimeLocation.com

Zoopla.co.uk

rightmove

OnTheMarket.com