



Silver Crescent, Chiswick, W4 5SE

A beautifully presented 3 bedroom period end of terrace ground floor flat situated within this popular residential road just a short walk from Chiswick High Road with its array of boutique shops and restaurants. Close by is Chiswick Business Park and the travel convenience of the well connected Gunnersbury Tube Station (Underground/Overground). Accommodation provides : 16'5"x13'10" reception room with bay window, modern radiators and wood flooring. Master double bedroom with closed Courtyard, further double bedroom, luxury tiled family bathroom and further WC. Exceptional hallway storage leads to the modern fitted kitchen with cooking island and underfloor heating and off this the third bedroom ideal for use as a study guest or nursery. The standout feature of the flat is the impressive rear sun soaked landscaped garden and side access. Local transport links include Chiswick Park & Gunnersbury tube stations, numerous local bus routes with convenient vehicular access via A4/M4 to central London, Heathrow & The West. Hounslow Council Band D. EPC-C. The property is flexible on furnishings and available 1st August.

£3,250 Per Calendar Month

- Available 1st August
- Impressive laid to lawn rear garden
- Tiled luxury bathroom
- 950sq ft three bedroom garden flat
- Internal Courtyard
- Designer Kitchen with cooking Island
- Bi-folding doors
- EPC C
- Council Tax Band D

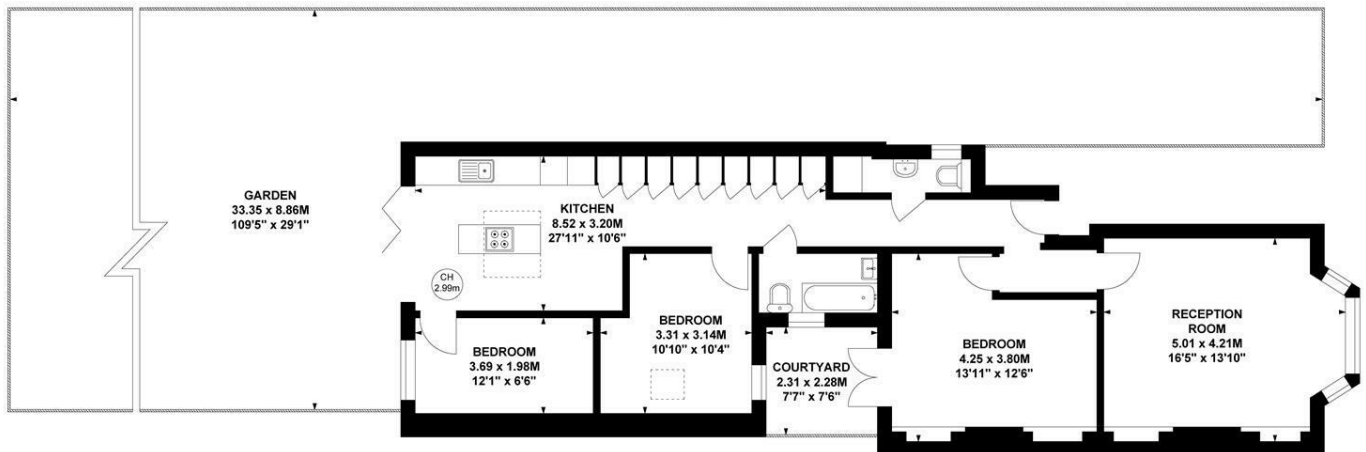
Silver Crescent, W4

Approximate Gross Internal Area

88.30 sq m / 950 sq ft

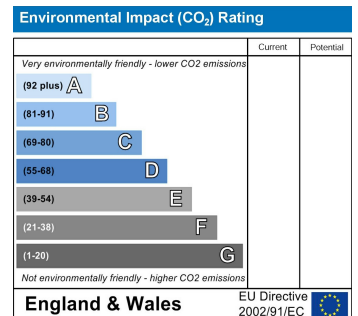
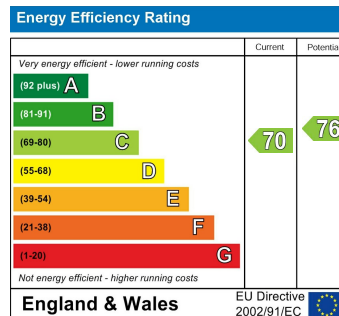


Key :
CH - Ceiling Height



Ground Floor

Not to scale, for guidance only and must not be relied upon as a statement of fact.
All measurements and areas are approximate only



5-7 Turnham Green Terrace, Chiswick, London, W4 1RG

Tel 020 8747 8800

E-mail lettings@whitmanandco.com

Website www.whitmanandco.com

PrimeLocation.com

Zoopla.co.uk

rightmove

OnTheMarket.com