



Hadley Gardens, London, W4 4NX

Guide Price £2,750,000

WHITMAN & CO.

SALES · LETTINGS · COMMERCIAL

- CONTRACTS EXCHANGED
- 44' Landscaped garden
- Imposing entrance hall
- Semi-detached period house
- Sought after location
- Fantastic transport links

Tenure - Freehold
Local Authority - Hounslow
Council Tax - Band G

THE PROPERTY

CONTRACTS EXCHANGED - A spacious six-bedroom semi-detached period house offers an excellent balance of living and entertaining space in this prestigious tree-lined residential road, close to numerous amenities. The property features a master suite, four/five further bedrooms, two additional shower rooms, a large entrance hall, two reception rooms, a 22' fully fitted kitchen/breakfast room, a utility room, a cloakroom, and a private 44' landscaped garden with covered side access. Ideally located within close proximity to Turnham Green tube station and the extensive range of shops, bars, and restaurants on Chiswick High Road.

Hadley Gardens, W4

Approximate gross internal area

231.32 sq m / 2490 sq ft
(Including Eaves Storage & Excluding Store)

Eaves Storage
14.12 sq m / 152 sq ft
Store

5.95 sq m / 64 sq ft

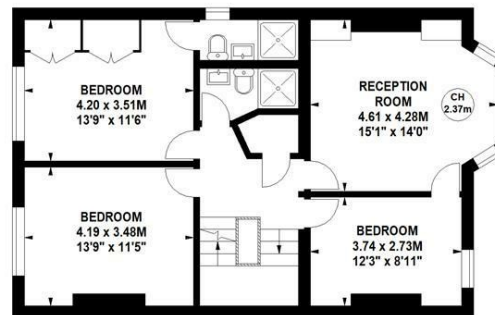
Key :
CH - Ceiling Height



Second Floor



Ground Floor



First Floor

Not to scale, for guidance only and must not be relied upon as a statement of fact.
All measurements and areas are approximate only

SITUATION



5-7 Turnham Green Terrace, Chiswick, London, W4 1RG

Tel 020 8747 8800

E-mail sales@whitmanandco.com

Website www.whitmanandco.com