



## Priory Road, London, W4 5JA

BRAND NEW KITCHEN - A delightful two bedrooomed mid-terrace cottage situated within this popular residential road Local shopping facilities are moments away whilst Chiswick's Main High Road with its array of boutique shops and restaurants is within walking distance retailers include M&S, Waitrose, Sainsbury & Tesco. The accommodation provides: open-plan reception area, newly fitted kitchen, ground floor fitted bathroom two bedrooms, front and rear gardens, CPZ parking, gas fired central heating. Local transport links include Turnham green & Chiswick Park tube stations, numerous local bus routes With convenient vehicular access via A4/M4 Central London, Heathrow & The West. Ealing Council Band E. EPC-D. The property is offered part furnished/unfurnished and is available now

- Lovely residential location
- Pretty terraced cottage
- Brand new fitted kitchen
- Open plan living area
- Fitted kitchen
- Two bedrooms
- Bathroom
- Front and rear gardens
- Part furnished / Unfurnished
- Available now

**£2,350 Per Calendar Month**

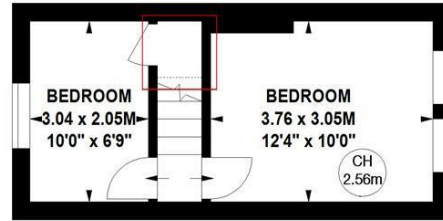
## Priory Road, W4

Approximate gross internal area

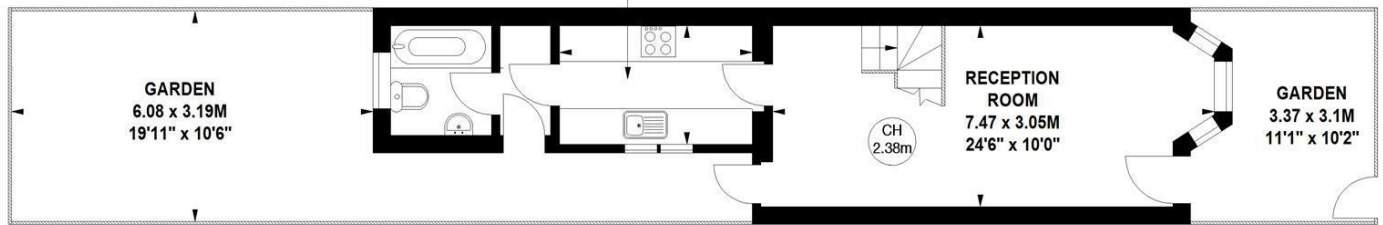
54.90 sq m / 591 sq ft



Key :  
CH - Ceiling Height

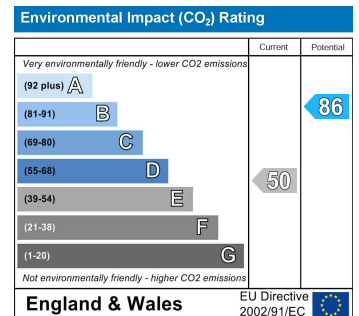
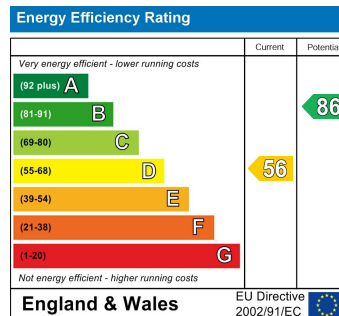


First Floor



Ground Floor

Not to scale, for guidance only and must not be relied upon as a statement of fact.  
All measurements and areas are approximate only



5-7 Turnham Green Terrace, Chiswick, London, W4 1RG

Tel 020 8747 3800

E-mail [lettings@whitmanandco.com](mailto:lettings@whitmanandco.com)

Website [www.whitmanandco.com](http://www.whitmanandco.com)

PrimeLocation.com

Zoopla.co.uk

rightmove

OnTheMarket.com

MISREPRESENTATION ACT 1967

Whitman & Co. for themselves and for the vendors give notice that these particulars do not constitute any part of, an offer of contract. All statements contained in these particulars are made without responsibility on the part of Whitman & Co. or the vendor. None of the statements contained in these particulars is to be relied upon as statements or representations of facts. Any intending purchaser must satisfy himself by inspection or otherwise as to the correctness of each of the statements contained in these particulars. The vendor does not make or give, and neither Whitman & Co. or any person in their employment has any authority to make or give, any representation or warranty whatever in relation to the property.