



## Sutton Court Road, London, W4 3EQ

A bright, well-proportioned top-floor flat with lovely open aspects set within this attractive red brick period building in the popular 'Grove Park' area of Chiswick, located within close proximity to Chiswick House and Grounds and the River Thames. The flat is well presented throughout with the accommodation comprising a west-facing reception room with space for dining which opens onto the fitted kitchen, a double bedroom, a bathroom with a separate bath and shower, a landing area with fitted cupboard, wood floors, large loft storage and a substantial communal garden. Transport links include Chiswick Station, local bus routes and the A4/M4 for routes in and out of London. The property is within a short walk of Chiswick High Road's shops, cafes and restaurants. Hounslow Council Band C. EPC-D. The property is offered unfurnished and available now.

- Top floor period conversion flat
- Handsome red-brick building
- Large communal garden
- Well proportioned rooms
- Close to numerous amenities
- Unfurnished
- Available now

**£1,750 Per Calendar Month**

## Sutton Court Road, W4

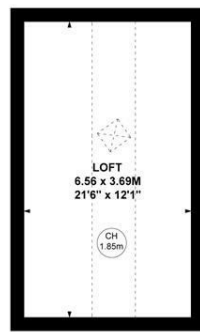
Approximate gross internal area  
44.65 sq m / 481 sq ft  
(Excluding Loft)  
Loft  
24.09 sq m / 259 sq ft



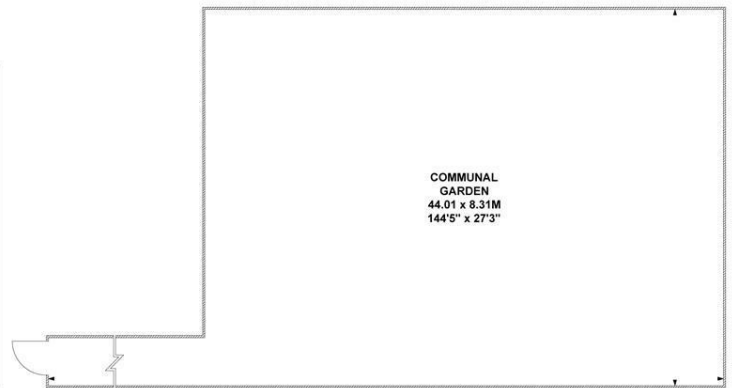
Key :  
CH - Ceiling Height



Second Floor



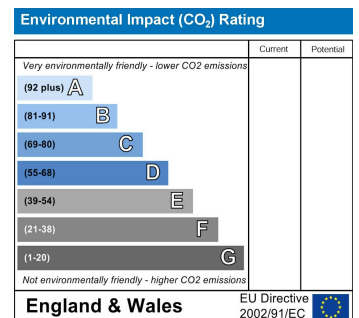
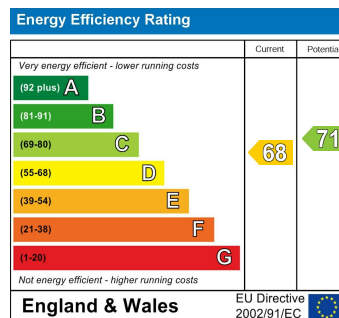
Loft



Ground Floor

Not to scale, for guidance only and must not be relied upon as a statement of fact.  
All measurements and areas are approximate only

Local Authority - Hounslow  
Council Tax - Band C



5-7 Turnham Green Terrace, Chiswick, London, W4 1RG

Tel 020 8747 8800

E-mail [lettings@whitmanandco.com](mailto:lettings@whitmanandco.com)

Website [www.whitmanandco.com](http://www.whitmanandco.com)

PrimeLocation.com

Zoopla.co.uk

rightmove

onTheMarket.com

MISREPRESENTATION ACT 1967

Whitman & Co. for themselves and for the vendors give notice that these particulars do not constitute any part of, an offer of contract. All statements contained in these particulars are made without responsibility on the part of Whitman & Co. or the vendor. None of the statements contained in these particulars is to be relied upon as statements or representations of facts. Any intending purchaser must satisfy himself by inspection or otherwise as to the correctness of each of the statements contained in these particulars. The vendor does not make or give, and neither Whitman & Co. or any person in their employment has any authority to make or give, any representation or warranty whatever in relation to the property.