



Prince Of Wales Terrace, London, W4 2EY

£2,950 Per Calendar Month

WHITMAN & CO.

SALES · LETTINGS · COMMERCIAL

- Modern and well presented apartment
- Underfloor heating and air con
- Spacious entrance hallway
- Available Now
- Close to shops and transport
- Open plan kitchen/living area with Juliet balcony
- Furnished

Lease Length - Long term
Furnishing - Furnished
Local Authority - Hounslow
Council Tax - Band E

Powell Place, W4

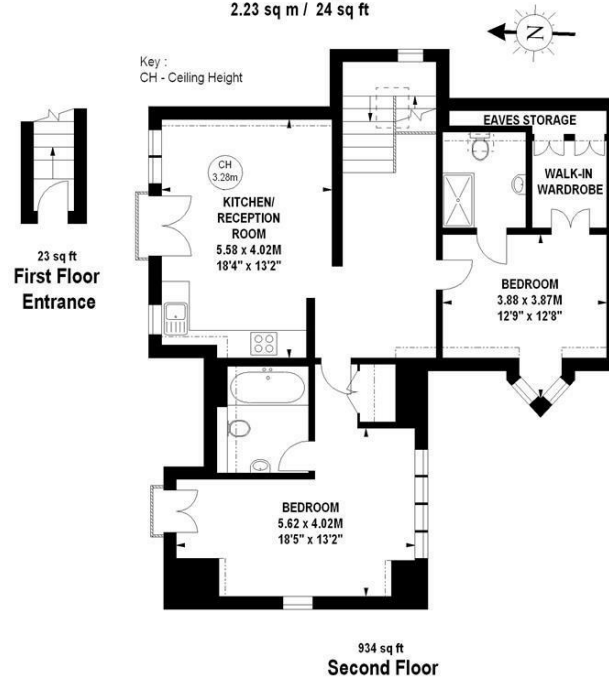
Approximate gross internal area

91.13 sq m / 981 sq ft

(Including Eaves Storage)

Eaves Storage

2.23 sq m / 24 sq ft



The floor plan is not to scale and measurements and areas shown are approximate and therefore should be used for illustrative purposes only. The plan has been prepared in accordance with the RICS code of Measuring Practice and whilst we have confidence in the information produced, it must not be relied on. If there is any aspect of particular importance, you should carry out or commission your own inspection of the property.
Copyright of FeaturePRO.

THE PROPERTY

A fantastic two double bedroom/two ensuite top floor flat with feature double-height ceilings, situated in a secure gated development. The property is located moments from the main shops and restaurants on Chiswick High Road and Turnham Green tube station. The accommodation provides: open plan kitchen and living area with Juliet balcony, master bedroom with walk-in wardrobe and ensuite, second double bedroom with en-suite bathroom, large entrance hall, and a secure allocated parking space. The property has the added bonus of air conditioning and underfloor heating throughout. Hounslow Council Band E. EPC-C. Offered as furnished. Available Now.

SITUATION



5-7 Turnham Green Terrace, Chiswick, London, W4 1RG

Tel 020 8747 8800

E-mail lettings@whitmanandco.com

Website www.whitmanandco.com