



## Bryher House, Chiswick, W4 4HG

A nicely presented two-bedroomed first-floor apartment situated in this very popular residential road in the heart of Chiswick adjacent to the open spaces of Turnham Green. Chiswick High road is just moments away with its array of boutique shops and restaurants, main retailers include M&S, Waitrose, Sainsbury, Tesco, and The Co-op. The accommodation provides: spacious dual aspect 16'10 x 11'4 living room with sliding doors onto a private balcony, fitted modern kitchen, two double bedrooms with fitted wardrobes, modern bathroom with utility area, gas fired central heating, wood effect flooring throughout living areas. Local transport links include Chiswick Park, Turnham Green, and Gunnersbury Tube stations, numerous local bus routes with convenient vehicular access via A4/M4/A40 to central London, Heathrow & The West. Hounslow Council Tax Band D. The property is offered unfurnished and is available immediately

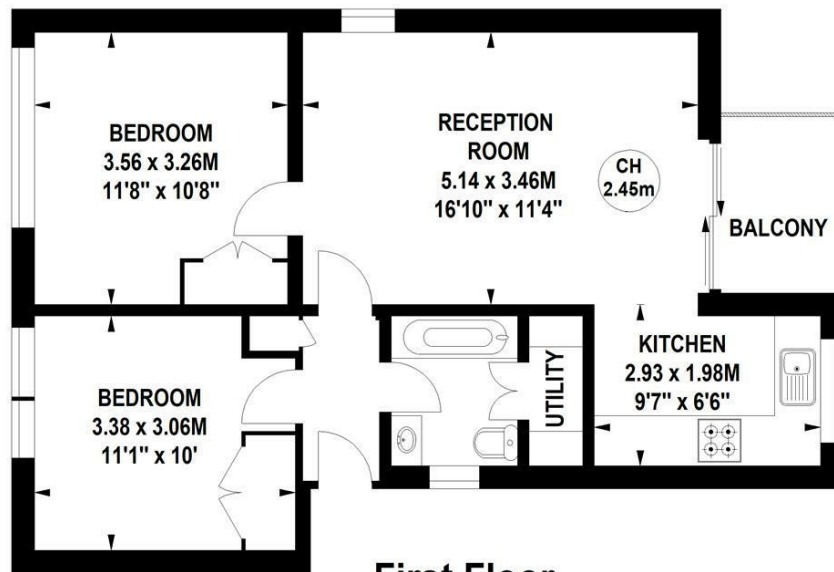
- Lovely Central Chiswick location
- Great for transport links
- Spacious dual aspect 16'10 x 11'4 living area
- Two double bedrooms with fitted wardrobes
- Fitted modern kitchen
- Bathroom with utility area
- Private balcony
- CPZ parking
- Offered unfurnished
- Available now

**£2,200 Per Calendar Month**

# Bryher House, Walpole Gardens, W4

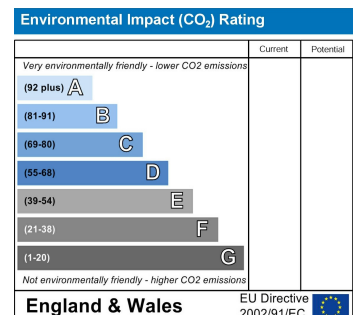
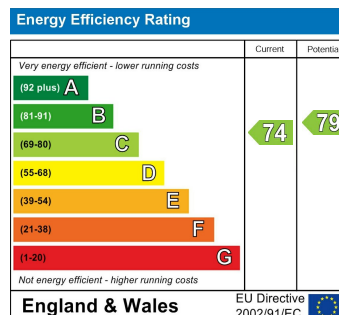
Key :  
CH - Ceiling Height

Approximate gross internal area  
56.20 sq m / 605 sq ft



**First Floor**

Not to scale, for guidance only and must not be relied upon as a statement of fact.  
All measurements and areas are approximate only



5-7 Turnham Green Terrace, Chiswick, London, W4 1RG

Tel 020 8747 8800

E-mail [lettings@whitmanandco.com](mailto:lettings@whitmanandco.com)

Website [www.whitmanandco.com](http://www.whitmanandco.com)

