



186 Chiswick High Road, W4 1PP

A very nicely presented two bedroomed split level maisonette situated in this very central Chiswick location, the extensive shopping and restaurant facilities of Chiswick's main High Road are on the doorstep. The accommodation provides: large open plan living room with fully fitted kitchen to rear and terrace to the front, two double bedrooms a main shower room and further en-suite shower room, stairs connecting first and second floors, gas fired central heating. Local transport links include Turnham Green tube station, numerous local Bus routes with convenient vehicular access via A4/M4 to central London, Heathrow & The West. Hounslow Council Tax Band E. The property is offered furnished and is available 17th July.

- Beautiful split level apartment
- Great for transport links
- Lovely central Chiswick Location
- Open plan living area
- Fitted galley style kitchen
- Two double bedrooms
- Main Shower room and further en-suite
- Private roof terrace
- Offered Furnished
- Available 17th July

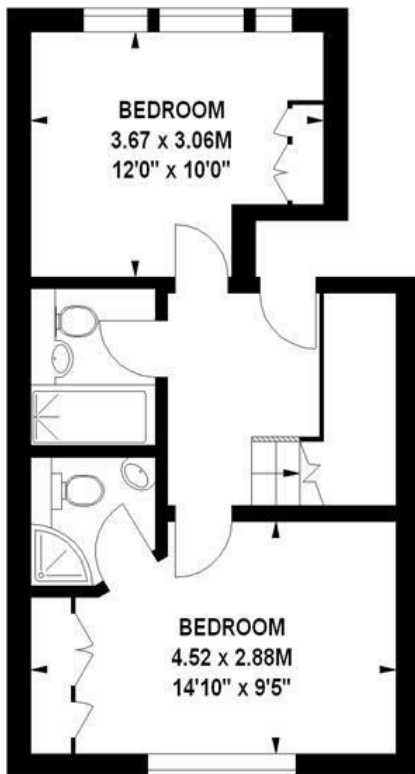
£2,450 Per Calendar Month

Chiswick High Road, W4

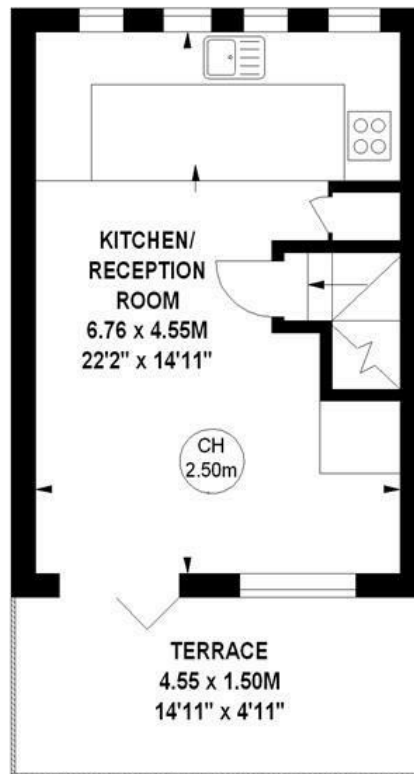
Approximate gross internal area

67.35 sq m / 725 sq ft

Key :
CH - Ceiling Height



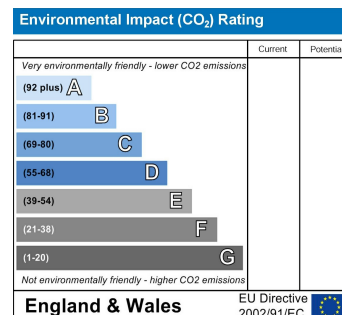
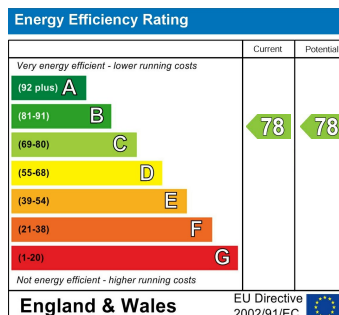
395 sq ft
First Floor



330 sq ft
Second Floor

The floor plan is not to scale and measurements and areas shown are approximate and therefore should be used for illustrative purposes only. The plan has been prepared in accordance with the RICS code of Measuring Practice and whilst we have confidence in the information produced, it must not be relied on. If there is any aspect of particular importance, you should carry out or commission your own inspection of the property.

Copyright of FeaturePRO.



5-7 Turnham Green Terrace, Chiswick, London, W4 1RG

Tel 020 8747 3800

E-mail lettings@whitmanandco.com

Website www.whitmanandco.com