



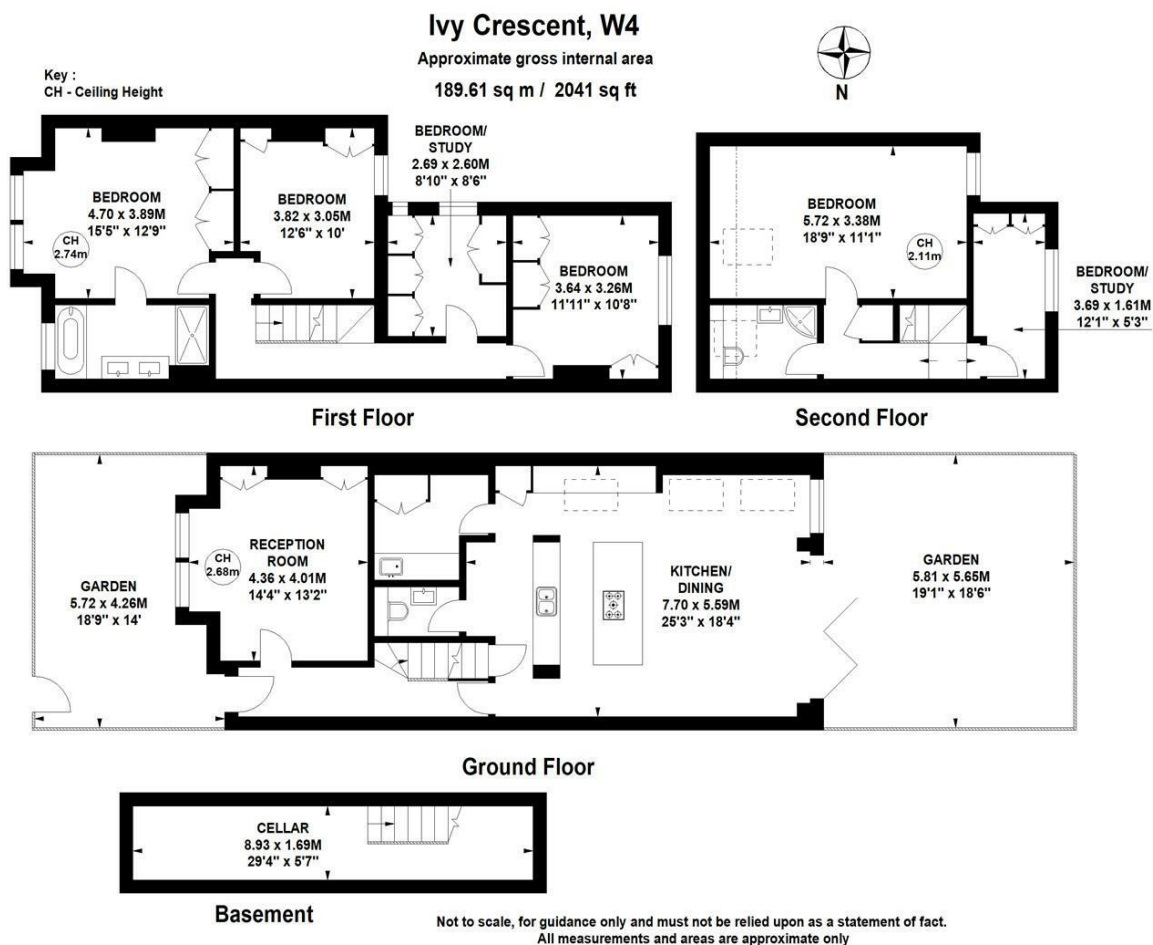
Ivy Crescent, London, W4 5NG

An impressive 2041sqft family home with excellent proportions and high specification finish, located on this quiet residential street within a short walk of numerous amenities. The house is fully extended with the accommodation comprising a stunning 25' full-width kitchen/family room, reception room with bay window, utility room/pantry, cloakroom, master bedroom with ensuite bathroom and fitted wardrobes, three further double bedrooms, single bedroom, study/dressing room, shower room, tanked cellar, landscaped garden with astroturf lawn and eaves storage. Ivy Crescent is in a superb location a stone's throw from Chiswick Business Park and a short walk to Chiswick High Road's shops, cafes and restaurants.

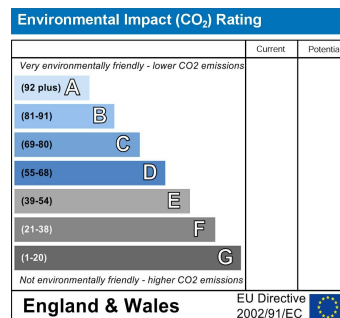
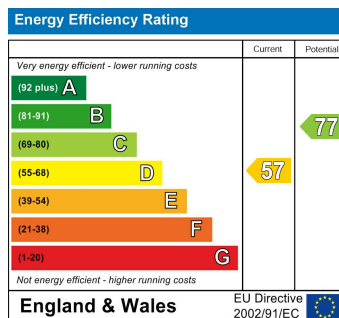
Transport links include Chiswick Park and Acton Town tube stations, South Acton Overground station, local bus routes and the A4/M4 for routes in and out of London. EPC - D Council Tax: Ealing Band G. Available 7th July, unfurnished.

- Immaculately presented family home
- Fully extended with excellent proportions
- Five beds/two baths plus study
- 25' Full width kitchen/family room
- Close to Chiswick High Road's shops, cafes and restaurants
- Excellent transport links
- Available 7th July

£5,750 Per Calendar Month



Local Authority - Ealing
Council Tax - Band G
Available - 7th July
Furnishing - Unfurnished



5-7 Turnham Green Terrace, Chiswick, London, W4 1RG

Tel 020 8747 8800

E-mail lettings@whitmanandco.com

Website www.whitmanandco.com

PrimeLocation.com

Zoopla.co.uk

[rightmove](http://rightmove.com)

OnTheMarket.com