



## Bolton Road, London, W4 3TE

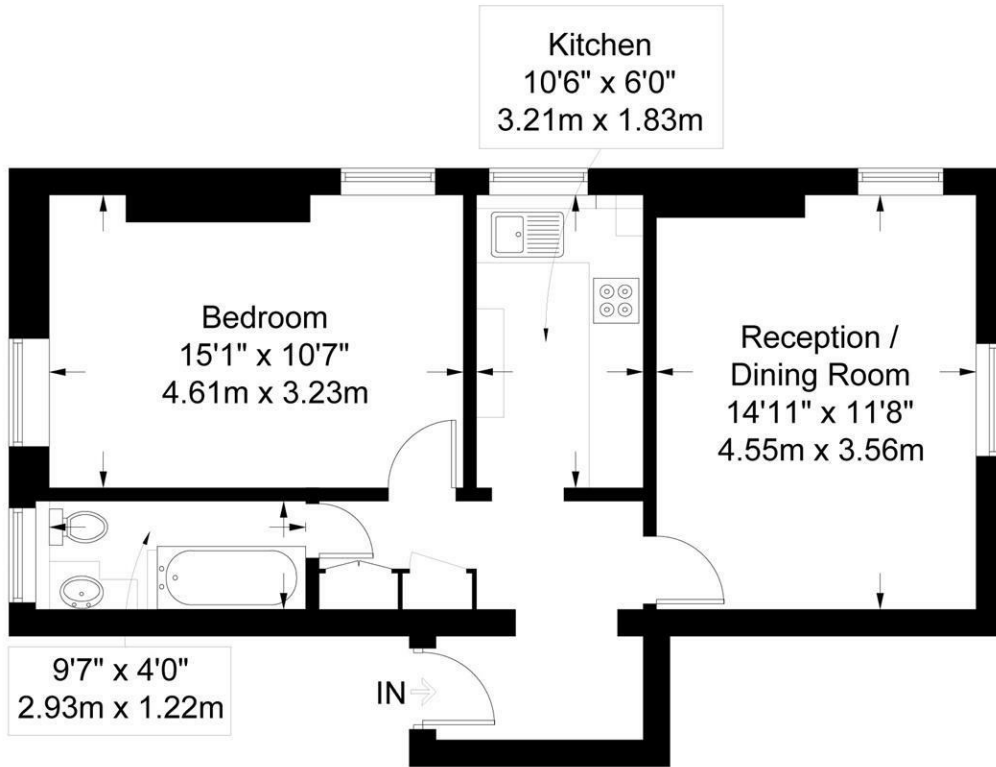
A beautifully presented top floor one-bedroomed conversion apartment within this imposing Victorian detached residence, the property is located within the "Grove park" area of Chiswick, renowned for its open spaces, parks & riverside walks along the historic Thames towpath, local shopping is found just moments away whilst further afield the more extensive shopping and restaurant facilities of Chiswick's main high Road, including M&S, Waitrose, Sainsbury & Tesco. The accommodation provides: Dual aspect reception /dining room, very nicely fitted kitchen, double bedroom with dual aspect, luxury bathroom, gas fired central heating, communal gardens, off-street parking. Local transport links include Chiswick mainline station(to Waterloo), numerous local bus routes with convenient vehicular access via A4/M4 central London, Heathrow & The West. Hounslow Council Band D. The apartment is offered furnished and available from 19th July

- Beautifully presented apartment
- Lovely "Grove Park" location
- Great for transport links
- Spacious dual aspect reception room
- Modern fitted kitchen
- Dual aspect double bedroom
- Luxury bathroom
- Off street parking
- Nice communal gardens
- Available 19th July, Furnished

**£1,850 Per Month**

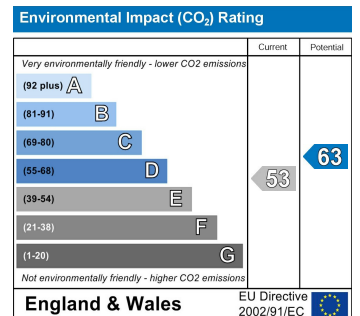
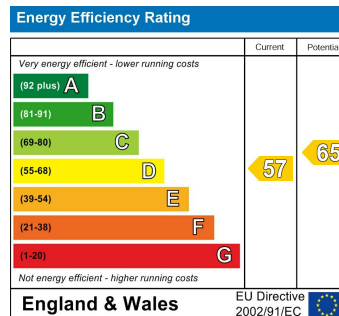
## Bolton Road, Chiswick W4 3TE

Approximate Gross Internal Area = 51 sq m / 549 sq ft



### Second Floor

Measured in accordance with RICS guidelines. To be used for identification and guidance purposes only. Not to scale.  
© Photos Plans and EPCs | Tel: 07774 688 771 | info@photosplansandepcs.com | www.photosplansandepcs.com



5-7 Turnham Green Terrace, Chiswick, London, W4 1RG

Tel 020 8747 8800

E-mail [lettings@whitmanandco.com](mailto:lettings@whitmanandco.com)

Website [www.whitmanandco.com](http://www.whitmanandco.com)

PrimeLocation.com

Zoopla.co.uk

rightmove

onTheMarket.com