



Bolton Road, London, W4 3TE

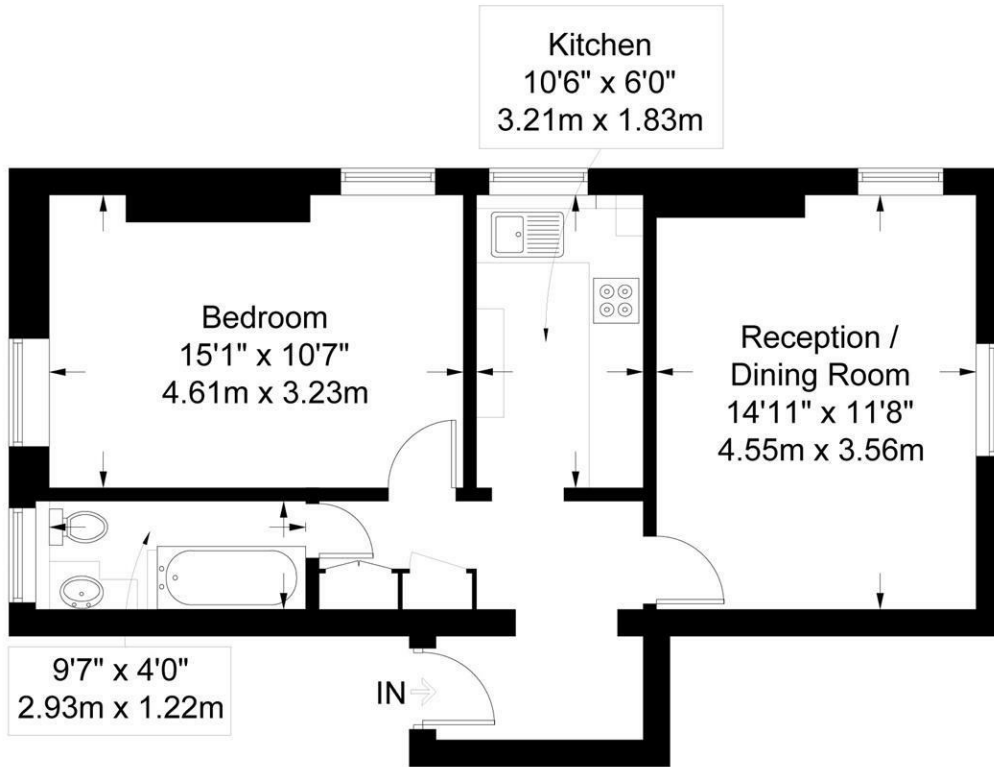
A beautifully presented top floor one-bedroomed conversion apartment within this imposing Victorian detached residence, the property is located within the "Grove park" area of Chiswick, renowned for its open spaces, parks & riverside walks along the historic Thames towpath, local shopping is found just moments away whilst further afield the more extensive shopping and restaurant facilities of Chiswick's main high Road, including M&S, Waitrose, Sainsbury & Tesco. The accommodation provides: Dual aspect reception /dining room, very nicely fitted kitchen, double bedroom with dual aspect, luxury bathroom, gas fired central heating, communal gardens, off-street parking. Local transport links include Chiswick mainline station(to Waterloo), numerous local bus routes with convenient vehicular access via A4/M4 central London, Heathrow & The West. Hounslow Council Band D. The apartment is offered furnished and available from 19th July

- Beautifully presented apartment
- Lovely "Grove Park" location
- Great for transport links
- Spacious dual aspect reception room
- Modern fitted kitchen
- Dual aspect double bedroom
- Luxury bathroom
- Off street parking
- Nice communal gardens
- Available 19th July, Furnished

£1,850 Per Month

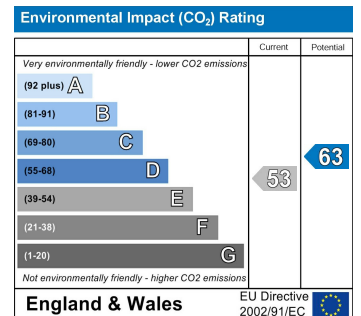
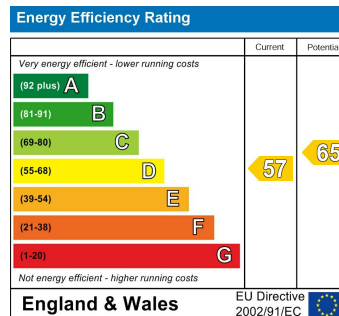
Bolton Road, Chiswick W4 3TE

Approximate Gross Internal Area = 51 sq m / 549 sq ft



Second Floor

Measured in accordance with RICS guidelines. To be used for identification and guidance purposes only. Not to scale.
© Photos Plans and EPCs | Tel: 07774 688 771 | info@photosplansandepcs.com | www.photosplansandepcs.com



5-7 Turnham Green Terrace, Chiswick, London, W4 1RG

Tel 020 8747 8800

E-mail lettings@whitmanandco.com

Website www.whitmanandco.com



MISREPRESENTATION ACT 1967

Whitman & Co. for themselves and for the vendors give notice that these particulars do not constitute any part of, an offer of contract. All statements contained in these particulars are made without responsibility on the part of Whitman & Co. or the vendor. None of the statements contained in these particulars is to be relied upon as statements or representations of facts. Any intending purchaser must satisfy himself by inspection or otherwise as to the correctness of each of the statements contained in these particulars. The vendor does not make or give, and neither Whitman & Co. or any person in their employment has any authority to make or give, any representation or warranty whatever in relation to the property.