



Sutton Lane North, London, W4 4LB

£399,950

WHITMAN & CO.

SALES · LETTINGS · COMMERCIAL

- Convenient central Chiswick location
- 13'11" x 11'5" main reception room
- Modern fitted kitchen
- Great for transport links & amenities
- Additional dining/living area
- Double bedroom with fitted wardrobes

Tenure - Leasehold
 Lease length - 999 Years remaining
 Ground Rent - Peppercorn
 Service Charge - 50% of outgoings
 Local authority - Hounslow
 Council tax - Band C

THE PROPERTY

An extremely versatile one/two-bedroom period conversion flat, ideally situated in a sought-after residential area close to the many amenities of Chiswick High Road.

The property features a 13'11" reception room, a fully fitted kitchen, a modern white bathroom suite, and offers flexible living accommodation.

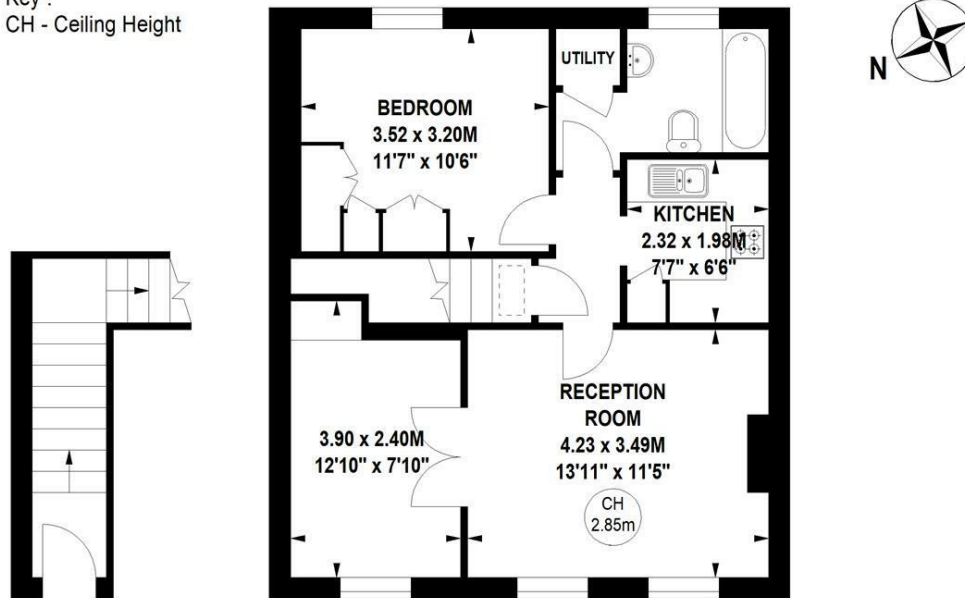
Further benefits include a brand new 999-year lease with a peppercorn ground rent and no onward chain. Conveniently located just a few minutes' walk from tube and bus links, as well as the extensive selection of shops, bars, and restaurants on Chiswick High Road.

Sutton Lane North, W4

Approximate gross internal area

57.51 sq m / 619 sq ft

Key :
 CH - Ceiling Height



Ground Floor
 Entrance

First Floor

Not to scale, for guidance only and must not be relied upon as a statement of fact.
 All measurements and areas are approximate only

SITUATION



5-7 Turnham Green Terrace, Chiswick, London, W4 1RG

Tel 020 8747 8800

E-mail lettings@whitmanandco.com

Website www.whitmanandco.com