



Heathfield Terrace, London, W4 4JB

A stunning 1590 sqft apartment located in this secure gated development in the heart of Chiswick. Finished to a meticulously high standard the apartment comprises; a vast open plan reception space with an impressive Hacker Kitchen, Quartz island and a private balcony. Master bedroom with ensuite bathroom, two further double bedrooms all with custom fitted wardrobes, luxury family bathroom, spacious entrance hall, utility room, extensive storage, engineered hardwood flooring throughout, communal gardens, concierge service and allocated underground parking (second space available upon request). Devonhurst Place is situated just off Turnham Green, being a stone's throw from Chiswick High Road with its extensive facilities. Transport links include Turnham Green and Chiswick Park Stations, local bus routes and the A4/M4 for routes in and out of London. Hounslow Council Band G. EPC: C - TBC. Offered Unfurnished and Available 30th June.

- Developed to a meticulously high standard
- 3 double bedrooms
- Private gated development
- Custom wardrobes
- Largest flat on the first floor
- Engineered hardwood flooring
- Hacker kitchen with Quartz surface and Quooker tap
- Underground parking (second space available upon request)
- Excellent central Chiswick location
- Available 30th June

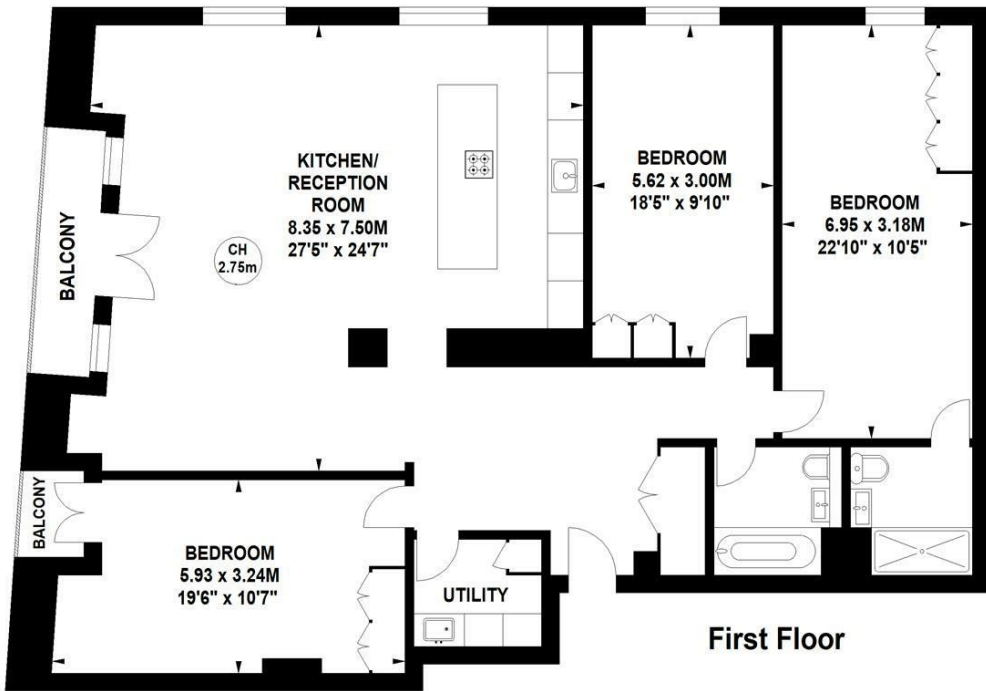
£5,000 Per Calendar Month

Devonhurst Place, W4

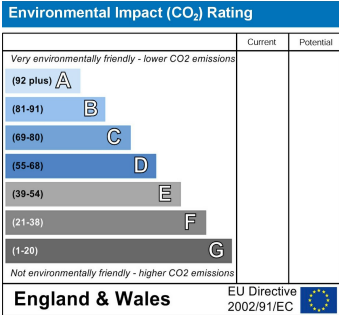
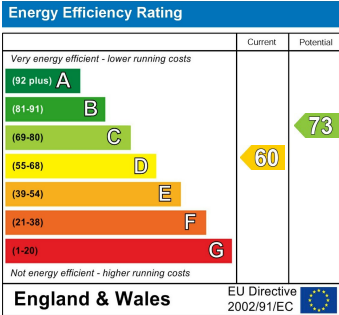
Approximate gross internal area

147.71 sq m / 1590 sq ft

Key :
CH - Ceiling Height



Not to scale, for guidance only and must not be relied upon as a statement of fact.
All measurements and areas are approximate only



5-7 Turnham Green Terrace, Chiswick, London, W4 1RG

Tel 020 8747 8800

E-mail lettings@whitmanandco.com

Website www.whitmanandco.com