



The Avenue, London, W4
Guide Price £2,250,000

WHITMAN & CO.

SALES · LETTINGS · COMMERCIAL



A charming five-bedroom Grade II listed family home, attributed to the renowned architect E.W. Godwin and located in the Bedford Park Conservation Area.

The property features a principal bedroom suite with an ensuite bathroom, four further bedrooms, a family bathroom, a large entrance hall, an 18'10x16'1 reception room with bay window, a spacious dining room, a fully fitted kitchen, a breakfast room, a conservatory with vaulted 3.5m high ceiling, extensive built-in and eaves storage, a fabulous 38' west-facing garden with covered side access and shed and an attractive front garden.

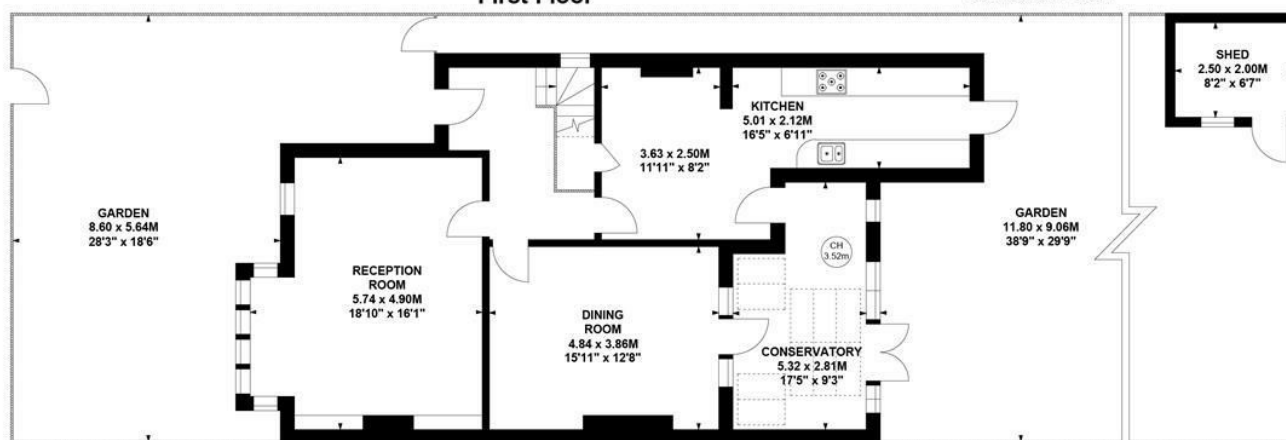
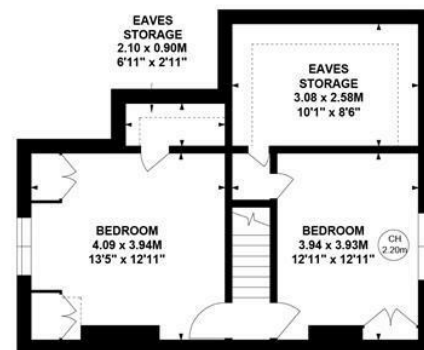
The house boasts a host of original features throughout and is conveniently located near Turnham Green tube station, as well as an excellent selection of shops, bars, and restaurants on Chiswick High Road. Offered for sale with no onward chain.





The Avenue, W4
 Approximate Gross Internal Area
209.20 sq m / 2252 sq ft
 (Including Eaves Storage & Shed)
Eaves Storage
12.16 sq m / 131sq ft
Shed
5.00 sq m / 54sq ft

Key :
CH - Ceiling Height



Not to scale, for guidance only and must not be relied upon as a statement of fact.
All measurements and areas are approximate only

- E.W. Godwin Grade II listed house
- Excellent reception space
- Fabulous 38' west facing garden

- Bedford Park Conservation area
- Five beds/two baths
- No onward chain

Tenure - Freehold
 Local Authority - Ealing
 Council Tax - Band G

