



King Street, London, W6 0RX

A nicely presented and bright one double bedroom first floor apartment located just moments from Chiswick High Road with its array of boutique shops and diverse restaurants.

Accommodation provides: a bright and airy 15'x123" living room with adjoining fitted kitchen, additional hallway storage, 12'7"x9'3" double bedroom with walk in wardrobe, tiled shower room, separate washer dryer and gas fired central heating.

Local transport links include: A one minute walk to Stamford Brook tube station & Turnham Green nearby, numerous local bus routes with convenient access via A4/M4 to Central London, Heathrow & The West. No parking permittable. Hammersmith and Fulham Band C, EPC rating C. Offered furnished and available 21st June.

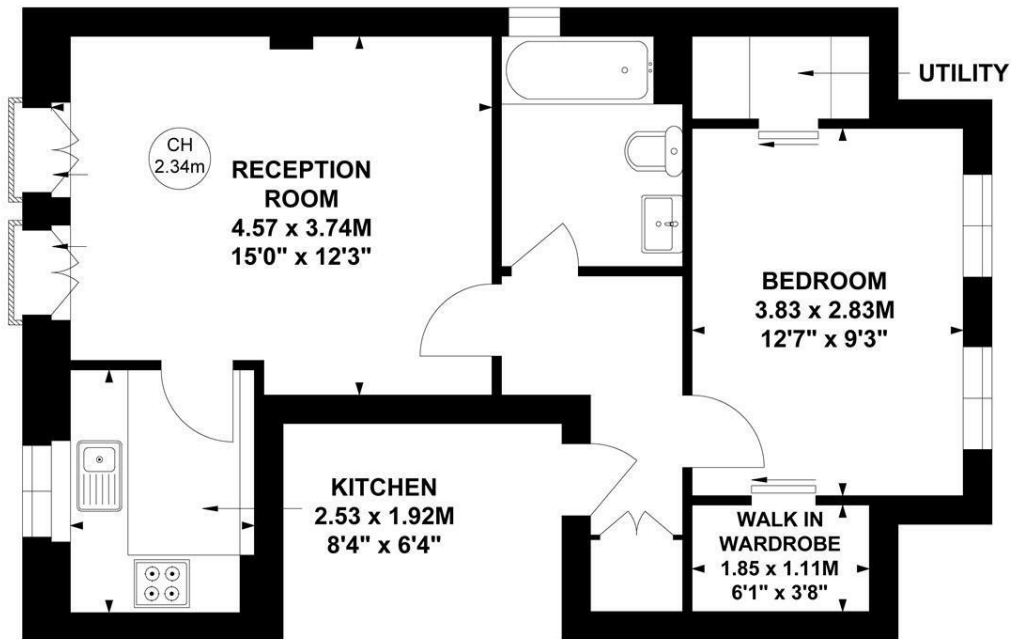
- Available 21st June
- Furnished
- Gas Fired Central Heating
- Walk in wardrobe
- Seperate washer / dryer
- EPC C
- Council Tax Band C
- Bright and airy one double bedroom apartment
- One minute walk to Stamford Brook tube station

£1,850 Per Calendar Month

King Street, W6

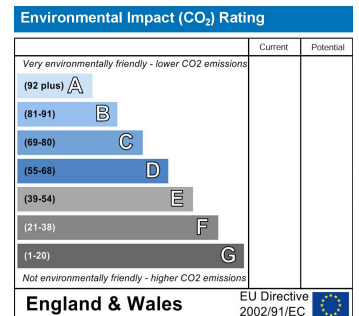
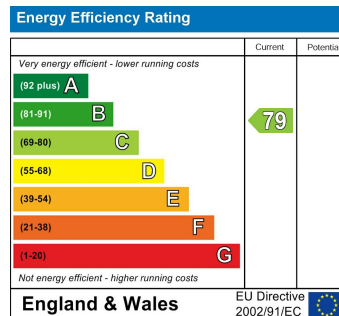
Approximate Gross Internal Area
46.27 sq m / 498 sq ft

Key :
CH - Ceiling Height



Second Floor

Not to scale, for guidance only and must not be relied upon as a statement of fact.
All measurements and areas are approximate only



5-7 Turnham Green Terrace, Chiswick, London, W4 1RG

Tel 020 8747 8800

E-mail lettings@whitmanandco.com

Website www.whitmanandco.com

PrimeLocation.com

Zoopla.co.uk

rightmove

OnTheMarket.com

MISREPRESENTATION ACT 1967

Whitman & Co. for themselves and for the vendors give notice that these particulars do not constitute any part of, an offer of contract. All statements contained in these particulars are made without responsibility on the part of Whitman & Co. or the vendor. None of the statements contained in these particulars is to be relied upon as statements or representations of facts. Any intending purchaser must satisfy himself by inspection or otherwise as to the correctness of each of the statements contained in these particulars. The vendor does not make or give, and neither Whitman & Co. or any person in their employment has any authority to make or give, any representation or warranty whatever in relation to the property.