



Ormsby Lodge, London, W4 1HS

HEATING & HOT WATER INCLUDED - A bright and spacious first-floor apartment situated in the Bedford Park Conservation Area within a short walk of Turnham Green Station and Chiswick High Road. The flat comprises; two double bedrooms, a bathroom, fitted kitchen, reception room, lift access, communal garden, and a communal heating and hot water system. The property is located close to Chiswick High Road's extensive array of shops, cafes, and restaurants. Transport links include Turnham Green Stations, local bus routes, and the A4/M4 for routes in and out of London. Available 3rd July, flexible on furnishings.

- Bedford Park Conservation Area
- Price includes heating and hot water
- Lift access
- First floor apartment
- Two double bedrooms
- Close to tube and high street
- Available 3rd July

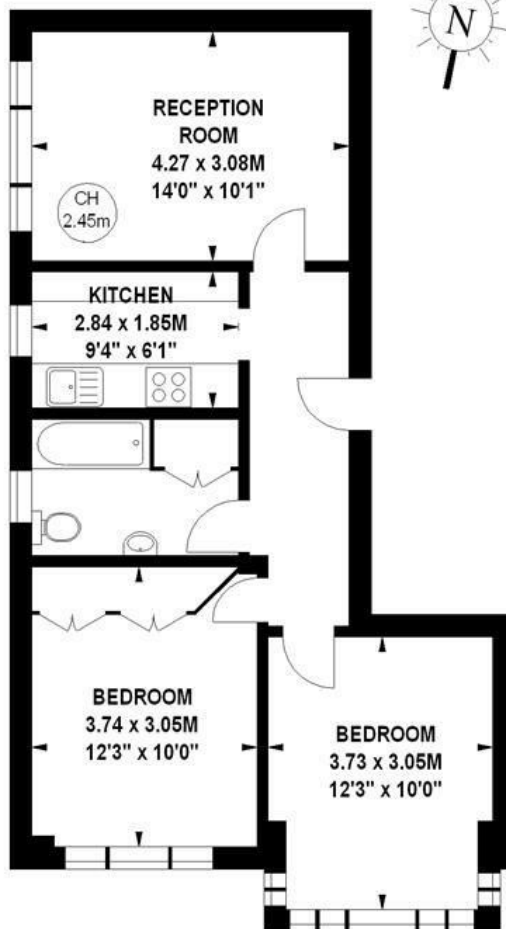
£2,000 Per Month

Ormsby Lodge, W4

Approximate gross internal area

55.09 sq m / 593 sq ft

Key :
CH - Ceiling Height



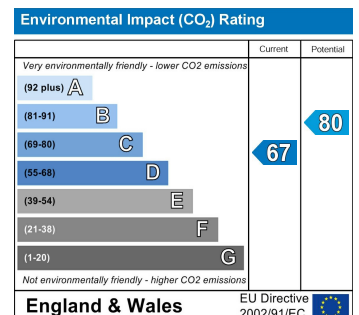
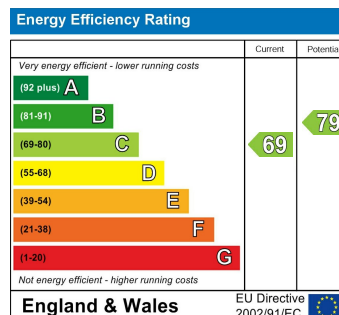
First Floor

The floor plan is not to scale and measurements and areas shown are approximate and therefore should be used for illustrative purposes only. The plan has been prepared in accordance with the RICS code of Measuring Practice and whilst we have confidence in the information produced, it must not be relied on.

If there is any aspect of particular importance, you should carry out or commission your own inspection of the property.

Copyright of FeaturePRO.

Lease length - Long term
Furnishing - Part furnished
Available - 1st July
Local Authority - Ealing
Council Tax - Band D



5-7 Turnham Green Terrace, Chiswick, London, W4 1RG

Tel 020 8747 3800

E-mail lettings@whitmanandco.com

Website www.whitmanandco.com

PrimeLocation.com

Zoopla.co.uk

rightmove

OnTheMarket.com

MISREPRESENTATION ACT 1967

Whitman & Co. for themselves and for the vendors give notice that these particulars do not constitute any part of, an offer of contract. All statements contained in these particulars are made without responsibility on the part of Whitman & Co. or the vendor. None of the statements contained in these particulars is to be relied upon as statements or representations of facts. Any intending purchaser must satisfy himself by inspection or otherwise as to the correctness of each of the statements contained in these particulars. The vendor does not make or give, and neither Whitman & Co. or any person in their employment has any authority to make or give, any representation or warranty whatever in relation to the property.