



## Devonshire Mews, London, W4 2HA

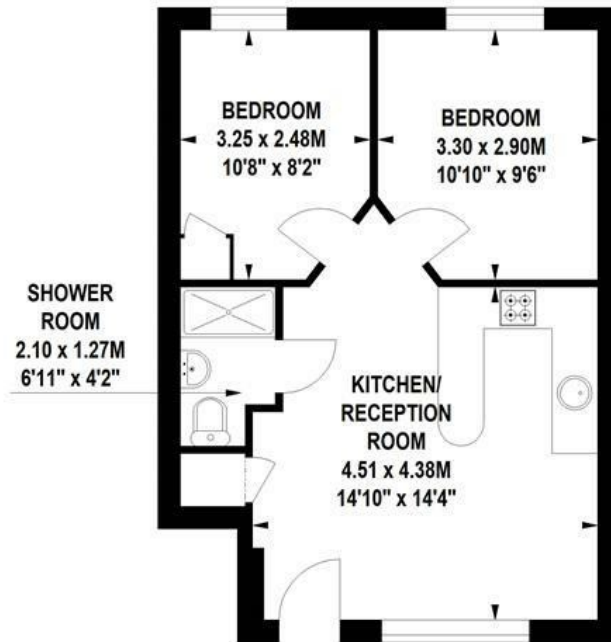
A wonderfully presented two-bedroomed ground-floor apartment situated in this very popular mews within the heart of Chiswick just moments from Chiswick High Road with its array of boutique shops and bars and restaurants, local retailers include M&S, Waitrose, Sainsbury, Tesco, and the Co-op. The accommodation provides spacious open plan living area with fully fitted galley style kitchen with breakfast bar, oak wood flooring and entrance area, two bedrooms with highline windows, oak wood flooring, luxury shower room, electric heating, and hot water. Local transport links include both Turnham Green and Stamford Brook tube stations (District & Piccadilly lines) numerous local bus routes with convenient vehicular access via A4/M4/M40 Central London, Heathrow, and the West. Hounslow Council Tax Band D, EPC-C. The property is presented excellently having been meticulously refurbished. Offered part furnished and available 5th July.

- Lovely central Chiswick location
- Immaculately presented
- Great for transport links
- Open plan living area
- Galley style fitted kitchen
- Part-furnished
- Two bedrooms
- Luxury shower room
- Private entrance
- Available 5th July

**£1,900 Per Calendar Month**

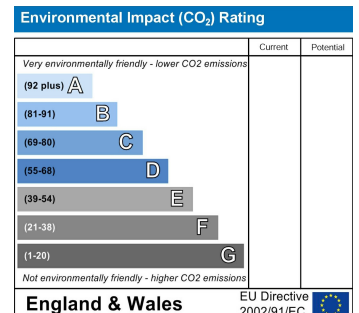
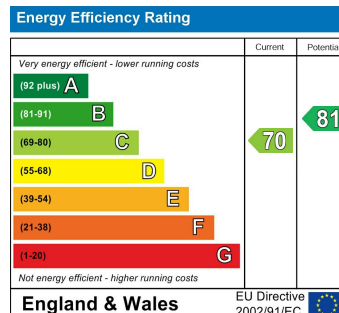
# Devonshire Mews, Chiswick, W4

Approximate gross internal area  
40.92 sq m / 440 sq ft



## Ground Floor

Not to scale, for guidance only and must not be relied upon as a statement of fact.  
All measurements and areas are approximate only



5-7 Turnham Green Terrace, Chiswick, London, W4 1RG

Tel 020 8747 8800

E-mail [lettings@whitmanandco.com](mailto:lettings@whitmanandco.com)

Website [www.whitmanandco.com](http://www.whitmanandco.com)

PrimeLocation.com

zoopla.co.uk

rightmove

onTheMarket.com