



Prebend Gardens, London
Guide Price £2,000,000

WHITMAN & CO.
SALES · LETTINGS · COMMERCIAL



A wider-than-average semi-detached period family home offering an excellent balance of living and entertaining space, enhanced by a generously sized, beautifully landscaped garden.

The accommodation includes a spacious master suite, three further bedrooms, two additional bathrooms, a large entrance hall, a formal front reception room, a stunning 24' bespoke kitchen/breakfast room, a utility room, and a cloakroom. Outside, the property boasts a private 56' landscaped garden, ideal for outdoor living and entertaining.

Ideally positioned on a prestigious residential road, the home offers close proximity to a wide range of local amenities, including shops, schools, and excellent transport links.



Prebend Gardens, W6

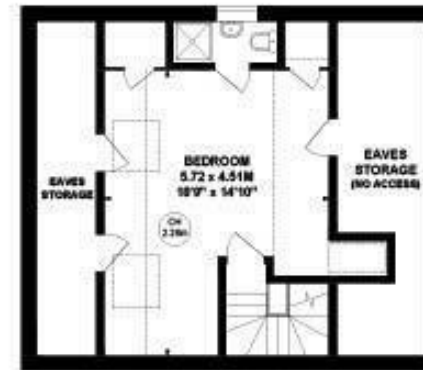
Approximate gross internal area
199.87 sq m / 2151 sq ft
(Including Eaves Storage)
Eaves Storage
18.80 sq m / 202 sq ft



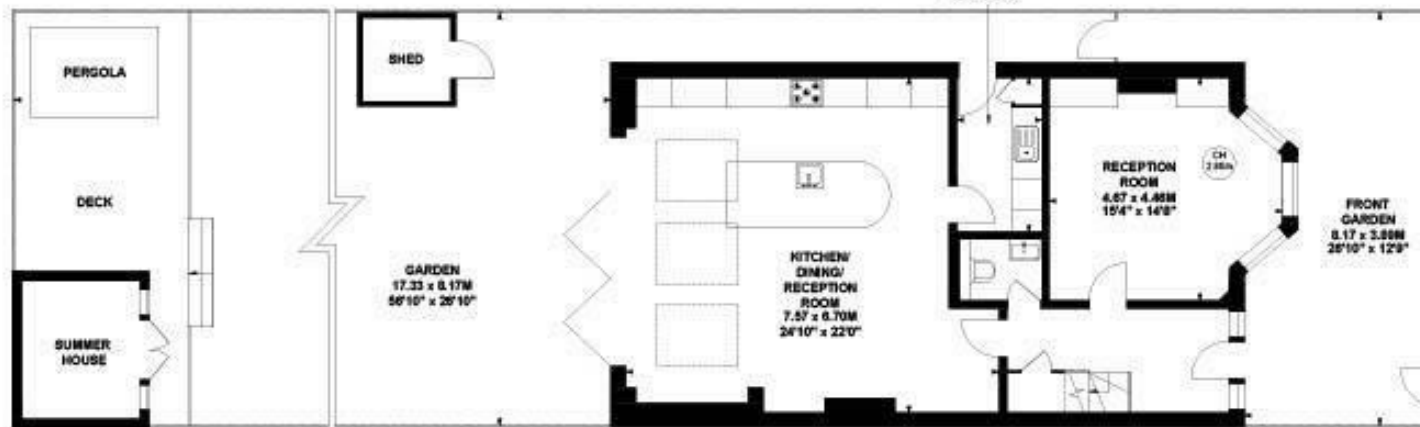
Key :
CH - Ceiling Height



First Floor



Second Floor



Ground Floor

Not to scale, for guidance only and must not be relied upon as a statement of fact.
All measurements and areas are approximate only

- Wider than average plot
- 56' Landscaped garden
- Sought after location

- Semi-detached
- Four bedrooms
- Fantastic transport links

Tenure - Freehold
Local Authority - Hounslow
Council Tax - Band G

