



Sutherland Road, London, W4 2QR

Guide Price £895,000

WHITMAN & CO.

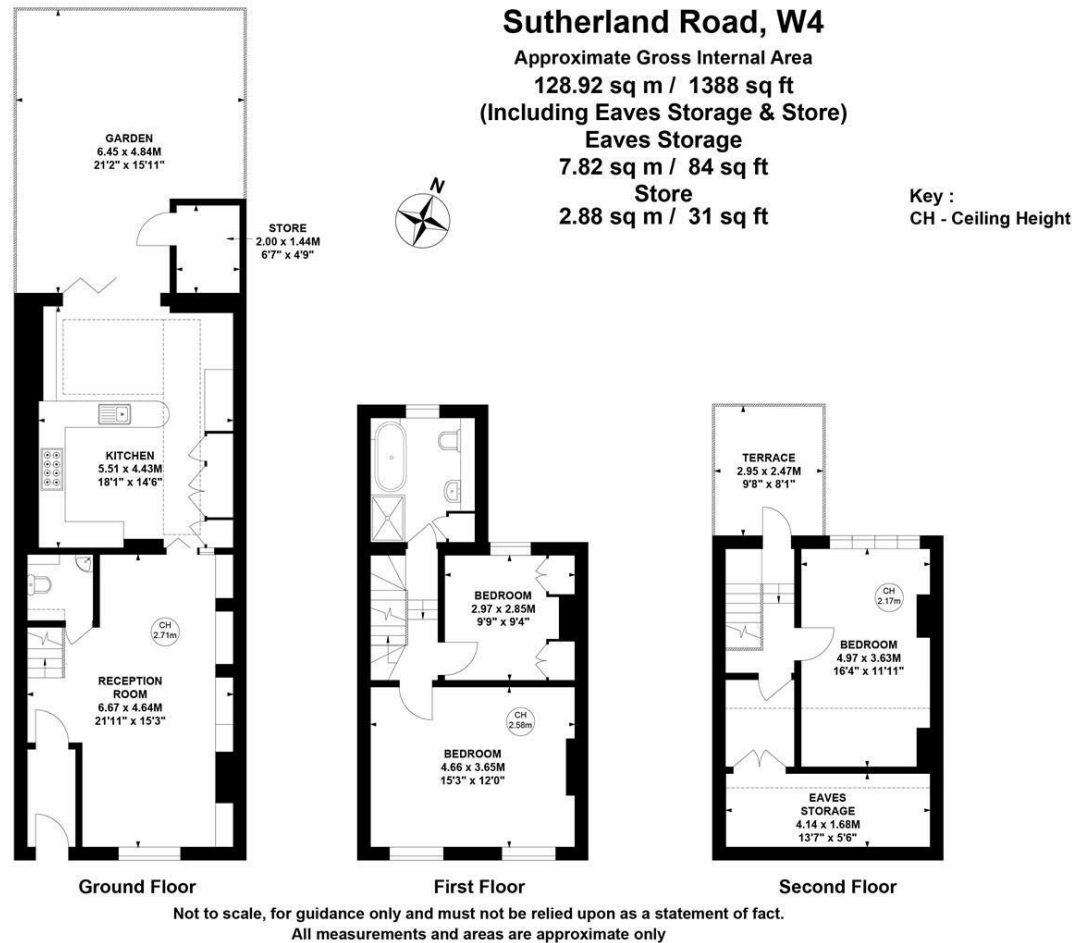
SALES · LETTINGS · COMMERCIAL

- Pretty Victorian terraced house
- Private garden backing onto Chiswick House
- 21'11 Reception room
- Fully extended kitchen/breakfast room
- Three well proportioned bedrooms
- Close to numerous amenities

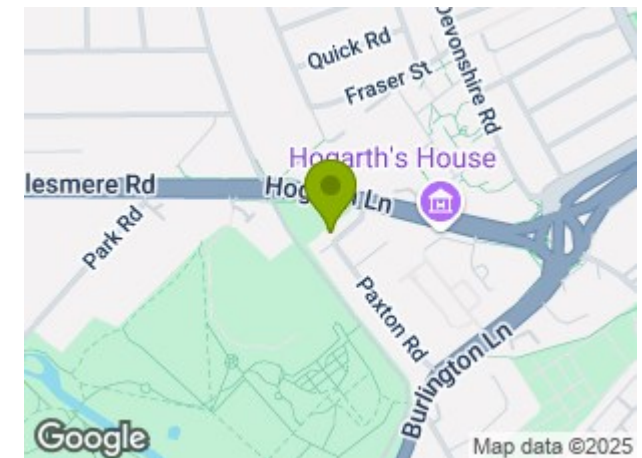
Tenure - Freehold
Local Authority - Hounslow
Council Tax - Band F

THE PROPERTY

A picture-perfect three-bedroom Victorian terraced house ideally located on the corner of the lovely Chiswick House and Gardens. This fully extended property boasts a magnificent, fully integrated modern kitchen with a feature skylight that merges into the beautifully kept private and leafy garden. There is a double reception leading to the light and spacious kitchen, a family bathroom, a Guest WC, and three well-proportioned bedrooms. Further benefits include a private roof terrace overlooking the greenery of Chiswick House and Gardens and ample storage throughout. The house is situated within walking distance of Chiswick High Road's shops, cafes and restaurants, Chiswick Mall, the Riverside, along with Chiswick House and Gardens. Transport links include Turnham Green tube station, Chiswick mainline station, numerous bus routes, and the A4/M4 for routes in and out of London.



SITUATION



5-7 Turnham Green Terrace, Chiswick, London, W4 1RG

Tel 020 8747 8800

E-mail sales@whitmanandco.com

Website www.whitmanandco.com