



Watchfield Court, London, W4 4NB

COMMUNAL HEATING & HOT WATER INCLUDED - A well presented light and airy third floor apartment with a private balcony with far reaching views situated in this very popular development in the heart of Chiswick, just a short walk to Chiswick's main high road with its array of boutique shops and restaurants. The accommodation comprises a double bedroom with fitted wardrobes, a fully fitted kitchen, a reception room with access to the balcony, family tiled bathroom, beautifully maintained communal gardens, residents parking, communal heating and hot water, lift access and porter. Local transport links include both Chiswick Park and Turnham Green tube stations, numerous local bus routes and convenient vehicular access via the A4/M4 to central London, Heathrow and the west. EPC-C. Hounslow Council Band D. Offered furnished and available now

£2,000 Per Calendar Month

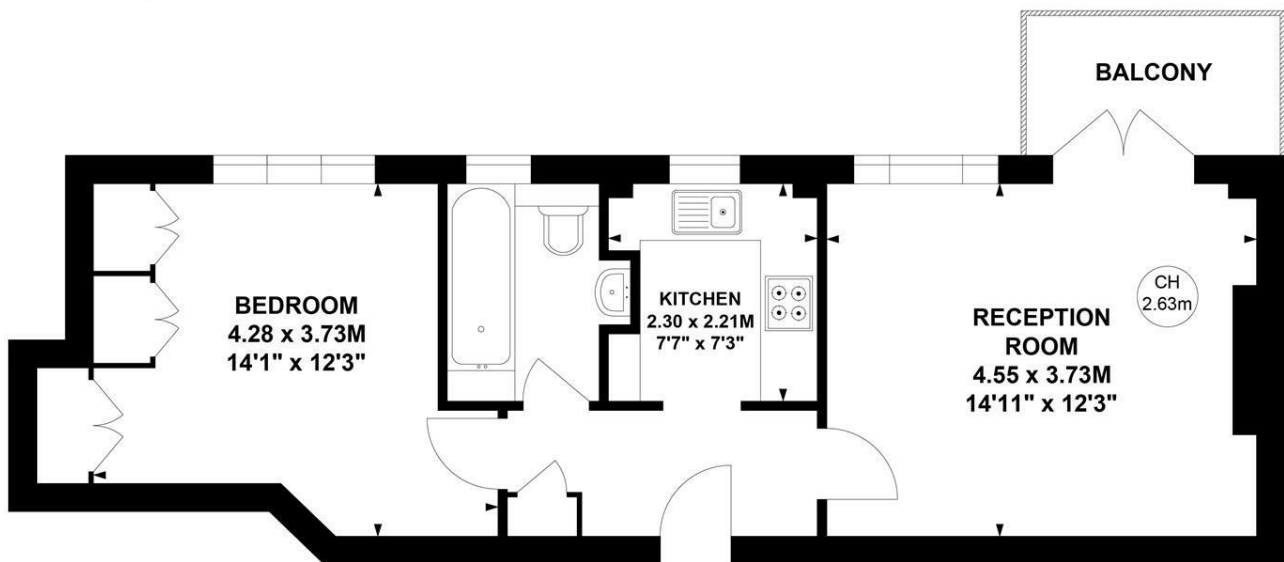
- Communal heating and hot water included
- Balcony with far reaching views
- Double bedroom with fitted wardrobes
- 15' Reception room
- Bright third floor apartment
- Furnished
- Permit parking space included
- Available now

Watchfield Court, W4

Approximate Gross Internal Area
45.37 sq m / 488 sq ft

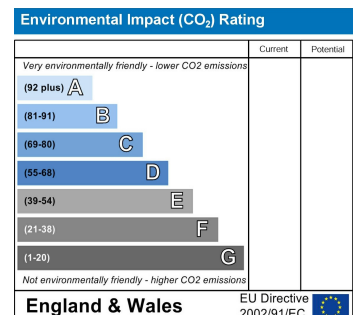
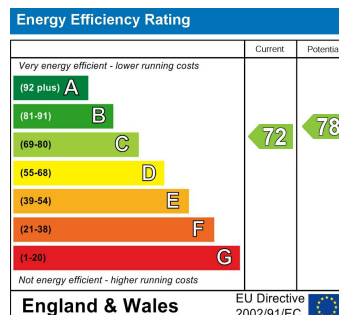


Key :
CH - Ceiling Height



Third Floor

Not to scale, for guidance only and must not be relied upon as a statement of fact.
All measurements and areas are approximate only



5-7 Turnham Green Terrace, Chiswick, London, W4 1RG

Tel 020 8747 8800

E-mail lettings@whitmanandco.com

Website www.whitmanandco.com

PrimeLocation.com

zoopla.co.uk

rightmove

onTheMarket.com

MISREPRESENTATION ACT 1967

Whitman & Co. for themselves and for the vendors give notice that these particulars do not constitute any part of, an offer of contract. All statements contained in these particulars are made without responsibility on the part of Whitman & Co. or the vendor. None of the statements contained in these particulars is to be relied upon as statements or representations of facts. Any intending purchaser must satisfy himself by inspection or otherwise as to the correctness of each of the statements contained in these particulars. The vendor does not make or give, and neither Whitman & Co. or any person in their employment has any authority to make or give, any representation or warranty whatever in relation to the property.