



Whellock Road, London, W4 1DY

Guide Price £1,500,000

WHITMAN & CO.

SALES · LETTINGS · COMMERCIAL

- Bedford Park borders
- Three further bedrooms and wet room
- 25' Through reception room
- Master bedroom with luxury bathroom
- Private South-facing landscaped garden
- 26' Bespoke kitchen/breakfast room

Tenure - Freehold
Local Authority - Ealing
Council Tax - Band G

THE PROPERTY

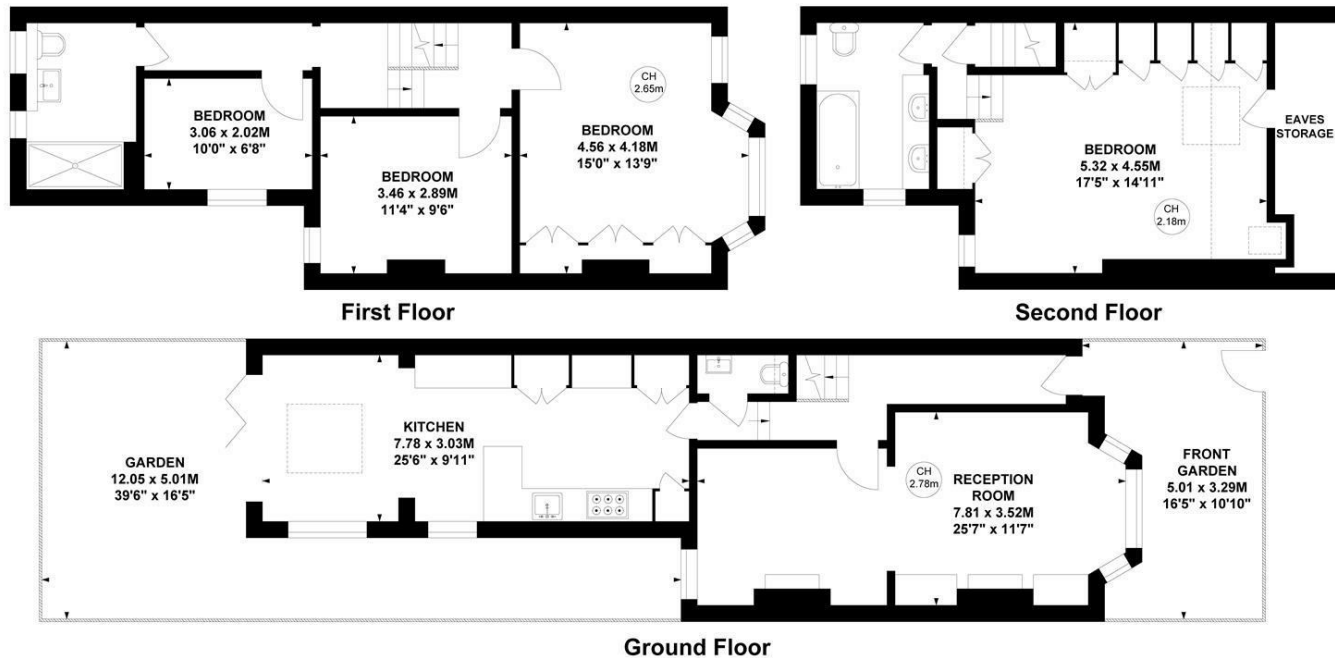
A spacious four-bedroom period family house offering an excellent balance of living and entertaining space in this sought-after tree-lined street on the borders of Bedford Park. Master bedroom with luxury bathroom, three further bedrooms, luxury wet room, 25' through reception room, 26' bespoke kitchen/breakfast room, cloakroom, private South-facing landscaped garden. Ideally situated within close proximity of Turnham Green tube station and the extensive range of shops, bars and restaurants on Chiswick High Road. The house is also within the catchment area of an OFSTED-rated outstanding school and local parks.

Whellock Road, W4

Approximate Gross Internal Area
146.30 sq m / 1575 sq ft
(Including Eaves Storage)
Eaves Storage
4.68 sq m / 50 sq ft

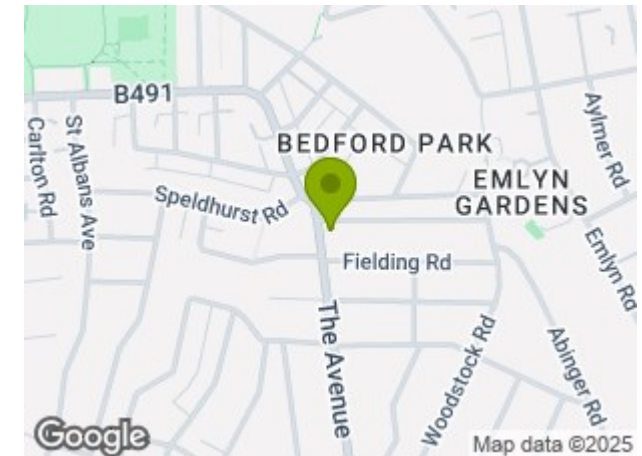


Key :
CH - Ceiling Height



Not to scale, for guidance only and must not be relied upon as a statement of fact.
All measurements and areas are approximate only

SITUATION



5-7 Turnham Green Terrace, Chiswick, London, W4 1RG

Tel 020 8747 8800

E-mail sales@whitmanandco.com

Website www.whitmanandco.com

