



Hawkshead Road, London, W4 1AD

A four bedroom family home situated in this very popular residential area within walking distance of Chiswick's main high road with its array of boutique shops and restaurants, main retailers include M&S, Waitrose, Sainsbury, Tesco & The Co-op. Accommodation provides: through reception room with dining area, fitted kitchen, ground floor cloakroom, four bedrooms, family bathroom including separate shower, additional WC, further ensuite shower room, gas fired central heating, private 40' rear garden with shed and garage accessed from the rear, pleasant 20' front garden. Transport links include Turnham green underground station (district line) numerous local bus routes with vehicular access via A4/M4/A40 to central London, Heathrow and the West, the property is available June 16th and is offered flexible on furnishings

- Lovely residential location
- Great for transport links
- Walking distance to Chiswick High Road
- Through spacious living area
- Separate kitchen
- Four bedrooms
- Family bathroom & separate WC
- Further en-suite shower room
- Front and rear gardens
- Garage accessed from rear

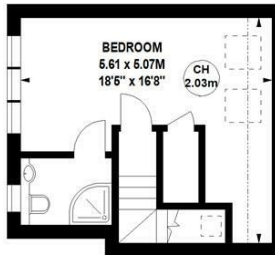
£3,200 Per Calendar Month

Hawkshead Road, W4

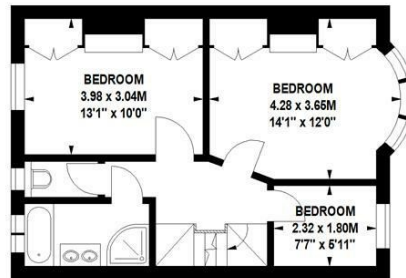
Approximate gross internal area
136.47 sq m / 1469 sq ft



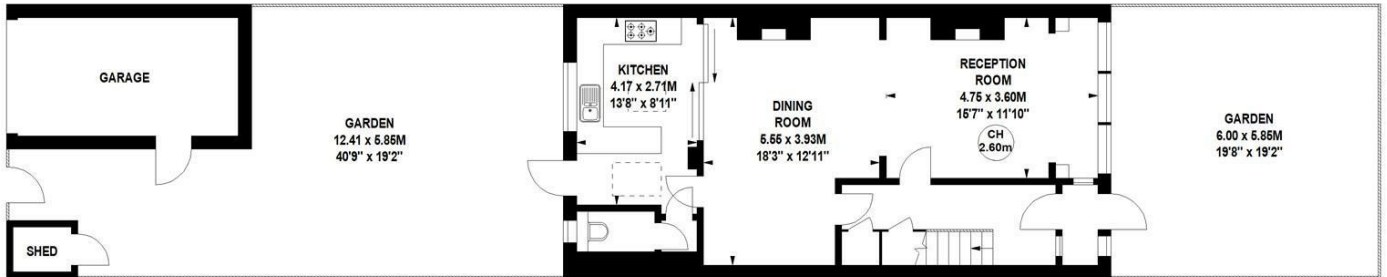
Key :
CH - Ceiling Height



Second Floor

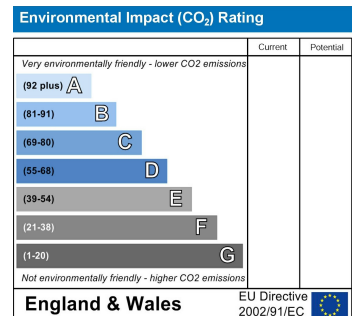
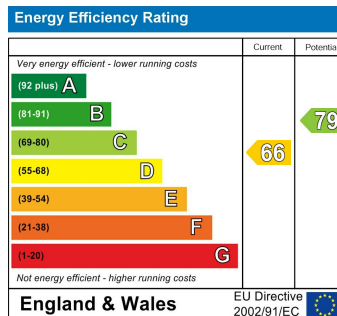


First Floor



Ground Floor

Not to scale, for guidance only and must not be relied upon as a statement of fact.
All measurements and areas are approximate only



5-7 Turnham Green Terrace, Chiswick, London, W4 1RG
Tel 020 8747 8800

E-mail lettings@whitmanandco.com
Website www.whitmanandco.com