



## Annandale Road, London, W4 2HH

A nicely presented, contemporary style split level three bedroomed apartment situated in this very popular location in the heart of Chiswick just moments from Chiswick's main high road with its array of boutique shops & restaurants. Local retailers include M&S, Waitrose, Sainsbury & Tesco. The accommodation provides: 15'8 x 13'1 living room with opening onto a private balcony, fitted kitchen, entrance level cloakroom, stairs to 2nd floor, three double bedrooms with fitted wardrobes, main bathroom, additional storage cupboards, gas fired central heating, lift, intercom, private parking on first come basis & CPZ parking, communal gardens to rear. Local transport links Turnham Green Tube station, numerous local bus routes with convenient vehicular access via A4/M4 central London, Heathrow & The West. Hounslow Council Tax Band D. EPC-C. The property is offered furnished or unfurnished and available 19th June.

- Lovely central Chiswick location
- Great for transport links
- Living area with balcony
- Fitted kitchen
- Three Bedrooms
- Bathroom and separate cloakroom
- Communal gardens & parking(FCFS)
- Flexible on furnishings
- Available 19th June

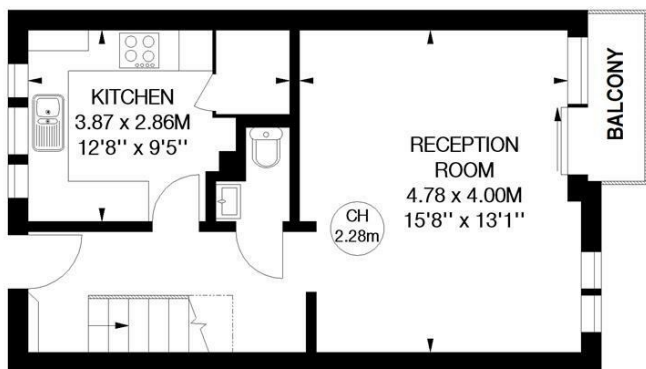
**£2,600 Per Calendar Month**

# Annandale Road, W4

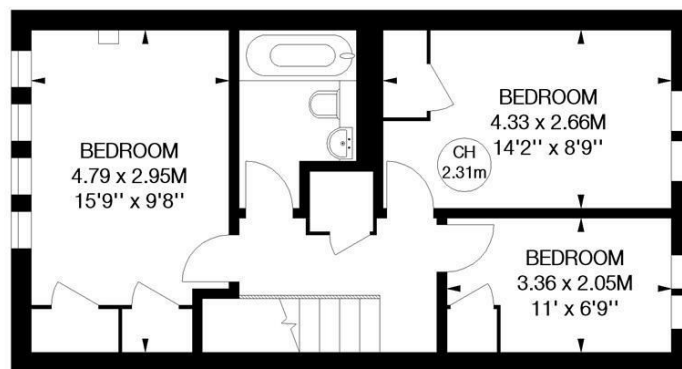
Approximate gross internal area  
84.91 sq m / 914 sq ft



Key :  
CH - Ceiling Height

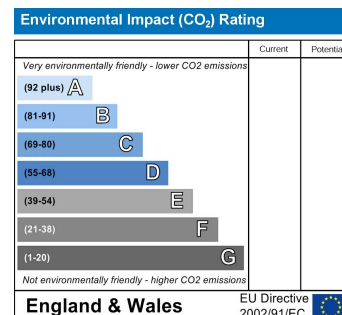
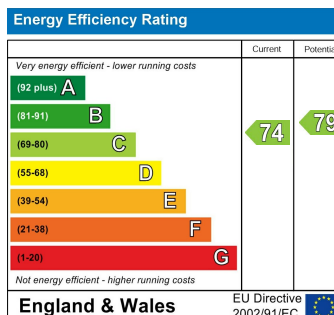


First Floor



Second Floor

Not to scale, for guidance only and must not be relied upon as a statement of fact.  
All measurements and areas are approximate only



5-7 Turnham Green Terrace, Chiswick, London, W4 1RG

Tel 020 8747 8800

E-mail [lettings@whitmanandco.com](mailto:lettings@whitmanandco.com)

Website [www.whitmanandco.com](http://www.whitmanandco.com)