

Chiswick High Road, London, W4 5RL

Guide Price £345,000

**WHITMAN & CO.**

SALES · LETTINGS · COMMERCIAL

- South facing studio apartment
- Huge windows with vaulted ceilings
- Clever design features
- High end fitted kitchen
- Secure gated parking space
- Close to numerous amenities

Tenure - Leasehold  
 Lease length - 100 Years remaining  
 Ground Rent - £200 pa  
 Service Charge - £2000 pa  
 Local authority - Hounslow  
 Council tax - Band D

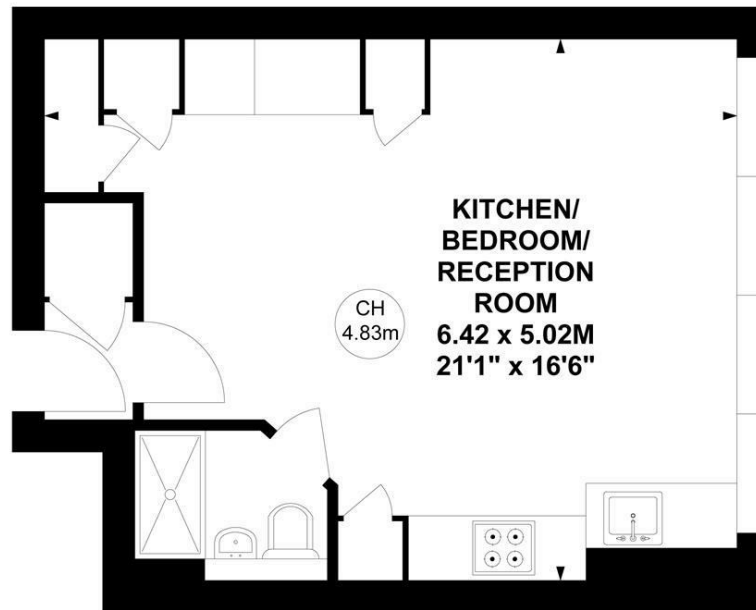
## Chiswick High Road, W4

Approximate Gross Internal Area

31.00 sq m / 334 sq ft



Key :  
 CH - Ceiling Height



### Fourth Floor

Not to scale, for guidance only and must not be relied upon as a statement of fact.  
 All measurements and areas are approximate only

## THE PROPERTY

An exceptionally light, well-designed fourth-floor studio apartment with large feature windows and vaulted ceiling nearly 5 metres high, which provide a feeling of space, located in this boutique development of apartments moments from numerous amenities whilst also offering a gated allocated off-street parking space. The flat is essentially one large living space with designated areas for sleeping, relaxing, cooking and eating. The bed is a wall bed, that turns into a dining table, the fitted shelving unit incorporates a TV which can be viewed from both the living and sleeping areas, there is a high-end fully integrated kitchen with full-size appliances, a smart shower room and a good amount of storage cupboards. The development offers lift access and the flat benefits from a gated allocated off-street parking space. The flat is moments from Chiswick High Road's shops, cafes and restaurants. Transport links include Chiswick Park and Gunnersbury stations, local bus routes and the A4/M4 for routes in and out of London.

## SITUATION



5-7 Turnham Green Terrace, Chiswick, London, W4 1RG

Tel 020 8747 8800

E-mail [sales@whitmanandco.com](mailto:sales@whitmanandco.com)

Website [www.whitmanandco.com](http://www.whitmanandco.com)