



## Arlington Gardens, London, W4 4EZ

A spacious and peaceful split level 1046sq ft three bedroomed apartment situated within this impressive building in the heart of central Chiswick, moments away are the extensive shopping and restaurant facilities of Chiswick's High Road.

Accommodation provides: main 16'1" reception/dining room, galley kitchen, tiled family bathroom, impressive double bedroom, additional double bedroom / study, upstairs is the master bedroom with eaves storage and modern tiled en-suite shower, gas central heating & hot water. Local transport links include Chiswick Park & Turnham Green tube stations, numerous local bus routes with convenient vehicular access via A4/M4 central London, Heathrow and the West. Hounslow Council Band E. EPC-C. Offered as part furnished (as shown) and available now.

- Available now
- Three double bedrooms
- Part Furnished
- Central Chiswick location
- Peaceful split level 1046 sq ft apartment
- On street parking via CPZ permit
- Tiled family bathroom
- Master suite with modern en-suite shower
- EPC-C
- Gas central heating

**£2,750 Per Calendar Month**

# Arlington Gardens, W4

Approximate gross internal area

97.14 sq m / 1046 sq ft

(Including Eaves Storage)

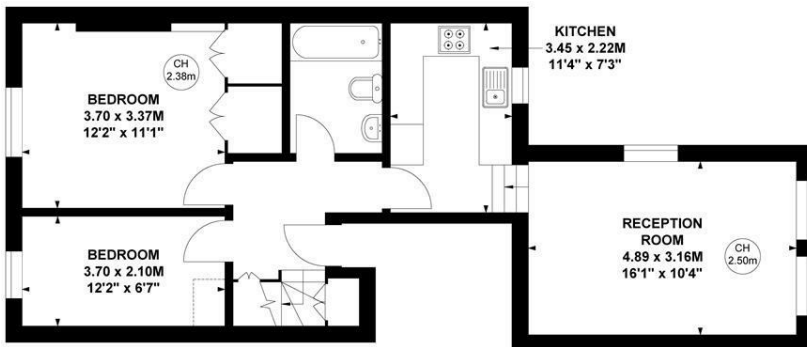
Eaves Storage

9.21 sq m / 99 sq ft

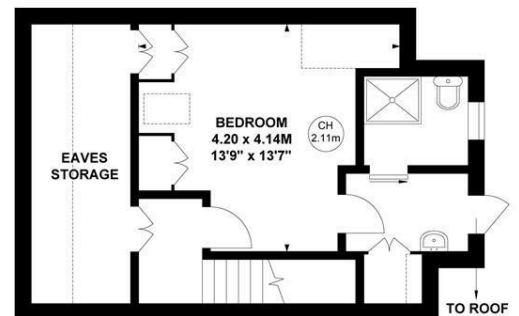


Key :

CH - Ceiling Height

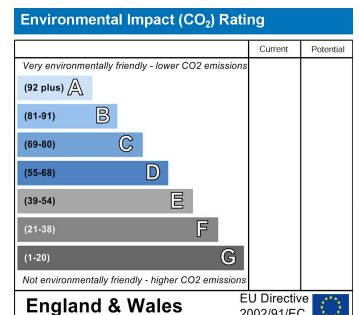
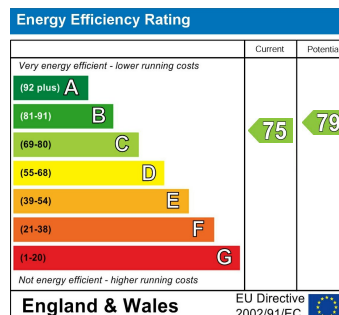


Second Floor



Third Floor

Not to scale, for guidance only and must not be relied upon as a statement of fact.  
All measurements and areas are approximate only



5-7 Turnham Green Terrace, Chiswick, London, W4 1RG

Tel 020 8747 8800

E-mail [lettings@whitmanandco.com](mailto:lettings@whitmanandco.com)

Website [www.whitmanandco.com](http://www.whitmanandco.com)

PrimeLocation.com

Zoopla.co.uk

rightmove

OnTheMarket.com

MISREPRESENTATION ACT 1967

Whitman & Co. for themselves and for the vendors give notice that these particulars do not constitute any part of, an offer of contract. All statements contained in these particulars are made without responsibility on the part of Whitman & Co. or the vendor. None of the statements contained in these particulars is to be relied upon as statements or representations of facts. Any intending purchaser must satisfy himself by inspection or otherwise as to the correctness of each of the statements contained in these particulars. The vendor does not make or give, and neither Whitman & Co. or any person in their employment has any authority to make or give, any representation or warranty whatever in relation to the property.