



Upham Park Road, London, W4 1PQ

NEW BATHROOM FITTED RECENTLY - A nicely presented studio apartment situated within this very popular residential road just a short walk from Chiswick High Road with its array of boutique shops and restaurants. Accommodation, separate kitchen, large studio room, double glazing, washing machine, shared patio. Local transport links include Turnham Green & Stamford Brook tube stations, numerous local bus routes with convenient vehicular access via A4 /M4 Central London, Heathrow & The West. Hounslow Council Tax Band A. The property is available 7th May and is offered part furnished.

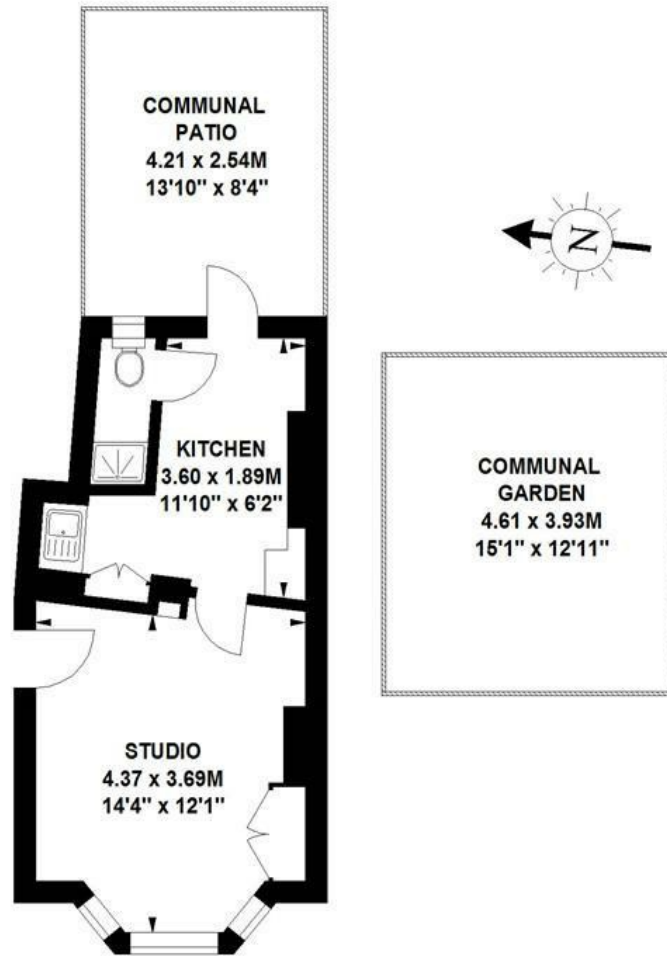
£1,500 Per Calendar Month

- Delightful residential road
- Nicely presented Studio apartment
- Great for transport links
- Open plan studio room
- Separate fitted kitchen
- Shower Room with WC
- Shared patio area
- Offered part furnished
- Available 7th May

Upham Park Road, W4

Approximate gross internal area

27.03 sq m / 291 sq ft

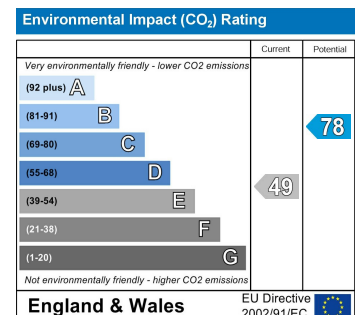
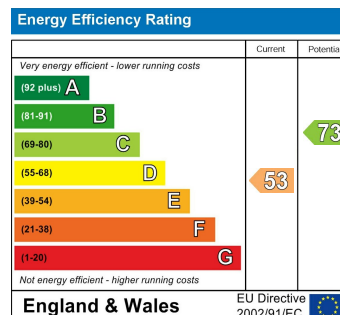


Ground Floor

The floor plan is not to scale and measurements and areas shown are approximate and therefore should be used for illustrative purposes only. The plan has been prepared in accordance with the RICS code of Measuring Practice and whilst we have confidence in the information produced, it must not be relied on.

If there is any aspect of particular importance, you should carry out or commission your own inspection of the property.

Copyright of FeaturePRO.



5-7 Turnham Green Terrace, Chiswick, London, W4 1RG

Tel 020 8747 8800

E-mail lettings@whitmanandco.com

Website www.whitmanandco.com

PrimeLocation.com

Zoopla.co.uk

[rightmove](http://rightmove.com)

OnTheMarket.com