



## Ashchurch Grove, London, W12 9BU

Formally a recording studio this two double bedroom, two bathroom flat has the added benefit of outside space and is ideally located a stones throw from the desirable Askew Road. The property comprises; master double bedroom leading to a private courtyard, further double bedroom with fitted wardrobes, two tiled bathrooms, impressive wood floored reception room with vaulted ceilings and galley kitchen. Askew Road's award-winning independent retailers, restaurants and coffee shops are on your door step with Westfield London and Chiswick High Road easily accessible. Transport links include local bus routes, the Central Line, District Line and Overground stations and the A40/M40 for routes in and out of London. Hammersmith & Fulham Band E. EPC-TBC. Available immediately and offered furnished.

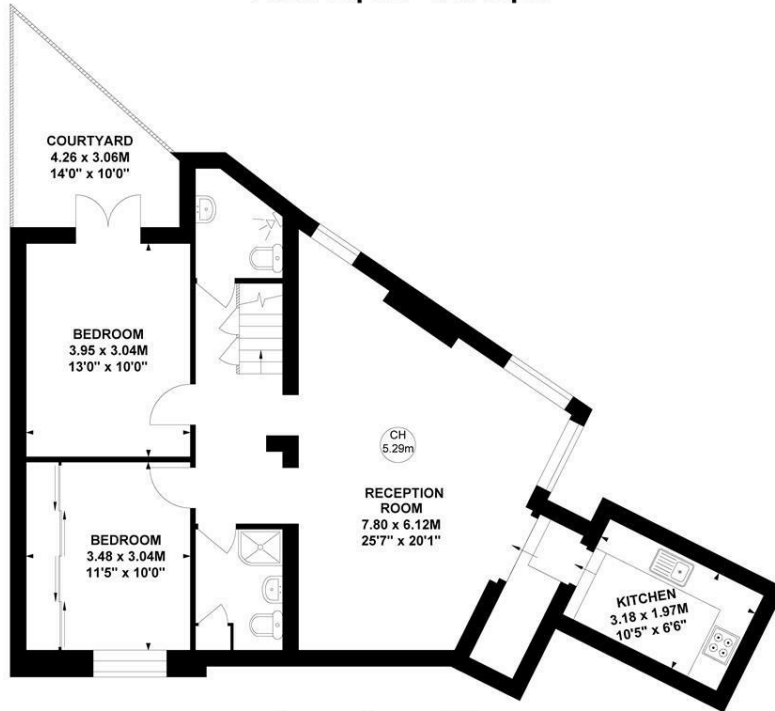
- Close to the desirable Askew Road
- Two Double Bedrooms
- Two Bathrooms
- Private Courtyard
- Wood flooring
- Furnished
- Available Now

**£2,350 Per Calendar Month**

# Ashchurch Grove, W12

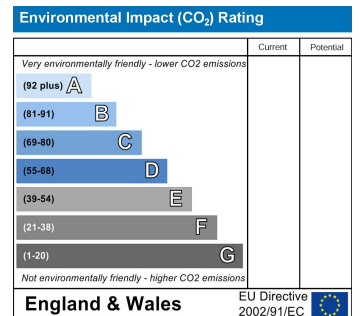
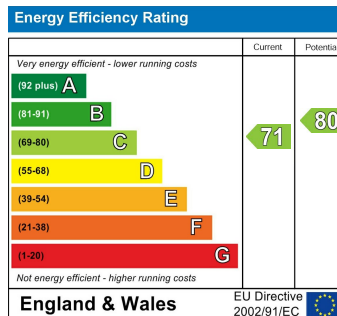
Approximate Gross Internal Area  
76.60 sq m / 825 sq ft

Key :  
CH - Ceiling Height



Lower Ground Floor

Not to scale, for guidance only and must not be relied upon as a statement of fact.  
All measurements and areas are approximate only



5-7 Turnham Green Terrace, Chiswick, London, W4 1RG

Tel 020 8747 8800

E-mail [lettings@whitmanandco.com](mailto:lettings@whitmanandco.com)

Website [www.whitmanandco.com](http://www.whitmanandco.com)



MISREPRESENTATION ACT 1967

Whitman & Co. for themselves and for the vendors give notice that these particulars do not constitute any part of, an offer of contract. All statements contained in these particulars are made without responsibility on the part of Whitman & Co. or the vendor. None of the statements contained in these particulars is to be relied upon as statements or representations of facts. Any intending purchaser must satisfy himself by inspection or otherwise as to the correctness of each of the statements contained in these particulars. The vendor does not make or give, and neither Whitman & Co. or any person in their employment has any authority to make or give, any representation or warranty whatever in relation to the property.