



Arlington Gardens, Chiswick, W4 4EZ

Guide Price £599,950

WHITMAN & CO.

SALES · LETTINGS · COMMERCIAL

- Immaculately presented period conversion flat
- Two bedrooms
- Central location close to numerous amenities
- 16'2 Dual aspect reception room
- Bright and spacious rooms
- No onward chain

Tenure - Leasehold + share of freehold
 Lease length - 87 Years remaining
 Ground Rent - Peppercorn
 Service Charge - £2400 pa
 Local authority - Hounslow
 Council tax - Band E

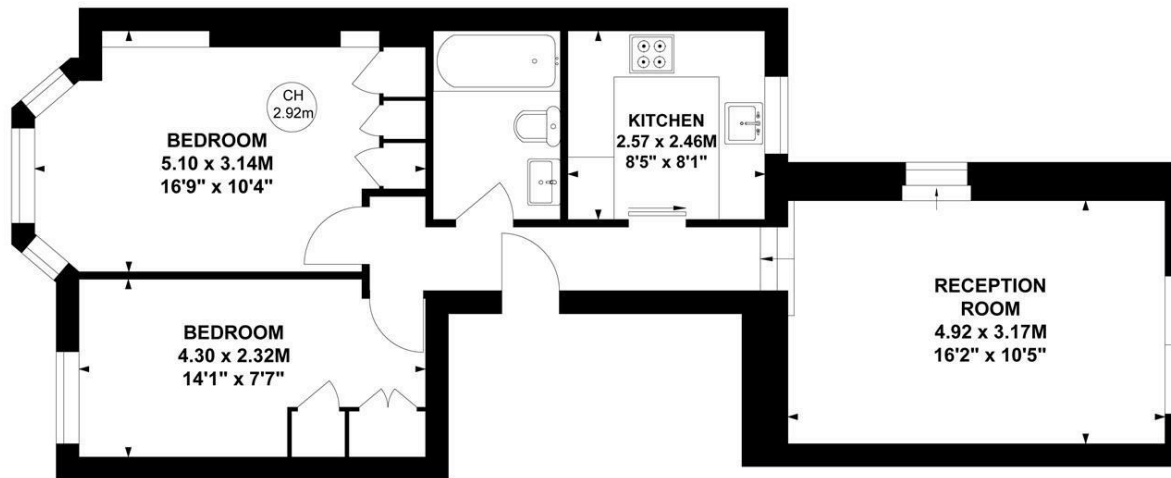
THE PROPERTY

An immaculately presented, bright and spacious first-floor period conversion flat ideally positioned on this centrally located residential road running west off Turnham Green. The accommodation comprises a 16'2 dual-aspect reception/dining room, a double bedroom with a bay window and fitted wardrobes, a second bedroom with fitted wardrobes, a fully fitted kitchen, a modern bathroom and a share in the freehold. Arlington Gardens runs west off Turnham Green and is moments from Chiswick High Road's shops, cafes and restaurants. Transport links include Chiswick Park and Gunnersbury stations, local bus routes and the A4/M4 for routes in and out of London. No onward chain.

Arlington Gardens, W4

Approximate gross internal area
 57.24 sq m / 616 sq ft

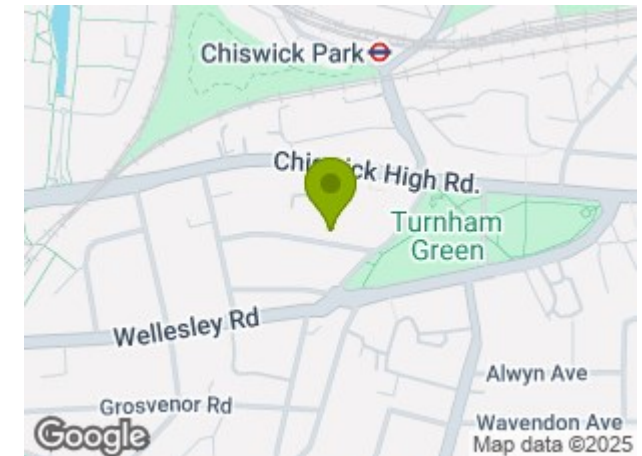
Key :
 CH - Ceiling Height



First Floor

Not to scale, for guidance only and must not be relied upon as a statement of fact.
 All measurements and areas are approximate only

SITUATION



5-7 Turnham Green Terrace, Chiswick, London, W4 1RG

Tel 020 8747 8800

E-mail sales@whitmanandco.com

Website www.whitmanandco.com