



Stile Hall Gardens, London, W4 3BP

£650,000

WHITMAN & CO.

SALES · LETTINGS · COMMERCIAL

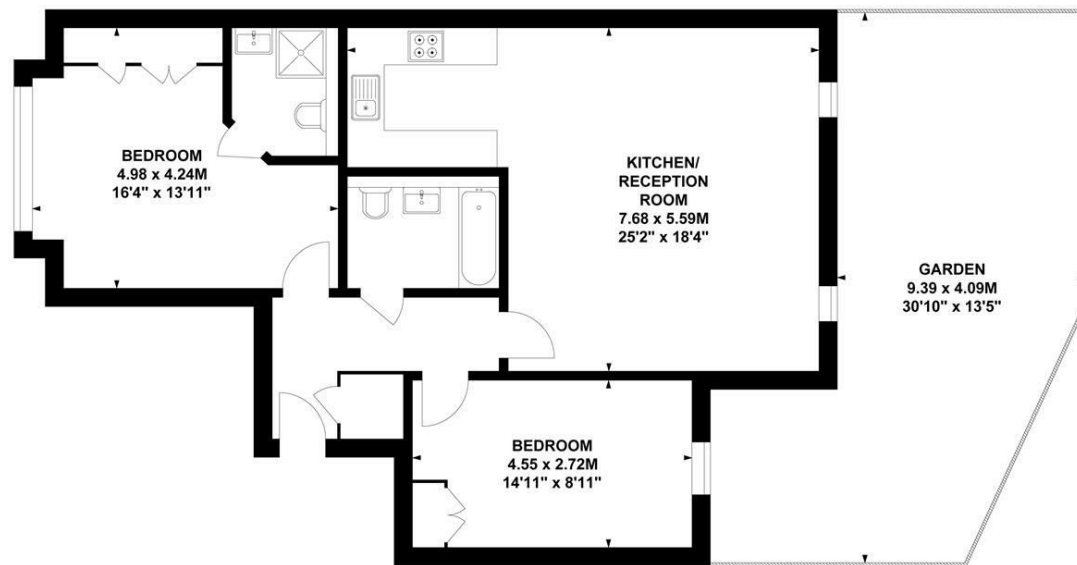
- Ground floor
- Allocated off-street parking
- Sought after location
- Private 30' garden
- Large two double bedrooms
- 870 sq ft of accommodation

Tenure - Leasehold
 Lease length - 986 years remaining
 Ground rent - Peppercorn
 Service charge - £2,899 pa
 Local authority - Hounslow
 Council tax - Band E

Argyle Court, W4

Approximate gross internal area
 80.8 sq m / 870 sq ft

Key :
 CH - Ceiling Height



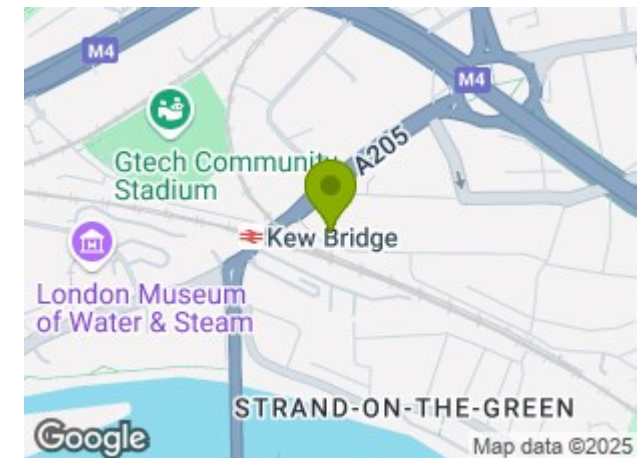
Ground Floor

Not to scale, for guidance only and must not be relied upon as a statement of fact.
 All measurements and areas are approximate only

THE PROPERTY

A recently built stylish two-bedroom ground-floor apartment with a 30' private garden, private allocated off-street parking in a sought-after residential area. This 80 sqm property offers a spacious master bedroom with a luxury en suite bathroom and fitted wardrobe, a second double bedroom, a family bathroom, a 25' reception room and a fully integrated kitchen. Presented in excellent order throughout. Built by the award-winning, well-renowned developer 'Aquinna Homes'. The flat is ideally situated in this sought-after residential area, which offers close proximity to all amenities and is within 400 meters of Gunnersbury underground station and a few minutes walk from Kew Bridge station, as well as being two blocks down from Strand on the Green primary school.

SITUATION



5-7 Turnham Green Terrace, Chiswick, London, W4 1RG

Tel 020 8747 8800

E-mail sales@whitmanandco.com

Website www.whitmanandco.com