



## Fairlawn Grove, London, W4 5EH

A beautifully presented first floor one bedroomed apartment with the benefit of a separate study/dining room situated in this popular residential road just a short walk from Chiswick's main high road with its array of boutique shops and restaurants, main retailers include M&S, Waitrose, Sainsburys, Tesco & The Co-op.

Accommodation provides: bright & spacious open plan living room with modern galley style fitted kitchen, large double sash windows to front, double bedroom with custom built Wardrobes and sash windows overlooking gardens to rear, luxury fitted bathroom, further study/dining room with sash window to front, electric heating and hot water.

Local transport links include Chiswick Park Tube station (District line) numerous local bus routes and convenient vehicular access via A4/M4/A40 to central London, Heathrow & The West, the property is offered unfurnished and is available now. Ealing Council Tax Band D. EPC-D

- Beautifully presented period apartment
- Lovely central Chiswick location
- Great for transport links
- Spacious open plan Living Room/Kitchen
- Double bedroom with fitted wardrobes
- Modern luxury bathroom
- Additional study/dining room
- Offered unfurnished
- Available now

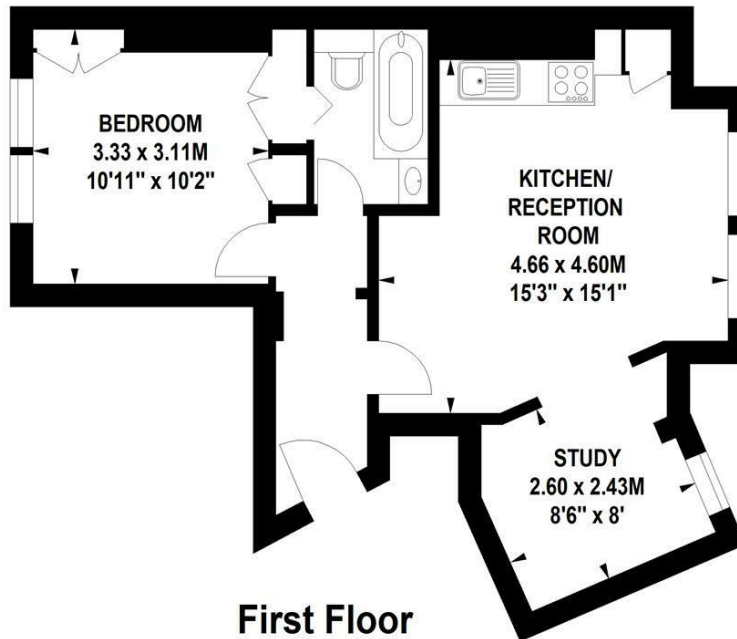
**£1,900 Per Calendar Month**

# Fairlawn Grove, W4

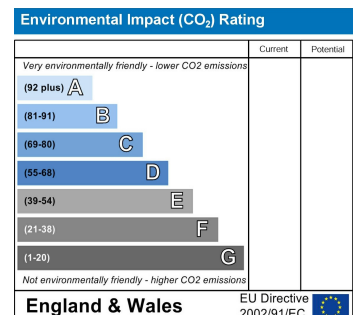
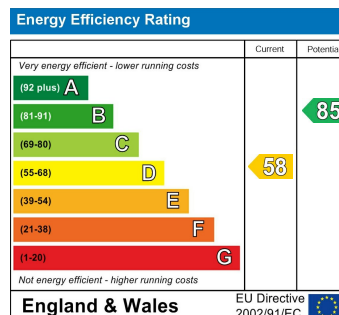
Approximate gross internal area

45.24 sq m / 487 sq ft

Key :  
CH - Ceiling Height



Not to scale, for guidance only and must not be relied upon as a statement of fact.  
All measurements and areas are approximate only



5-7 Turnham Green Terrace, Chiswick, London, W4 1RG

Tel 020 8747 8800

E-mail [lettings@whitmanandco.com](mailto:lettings@whitmanandco.com)

Website [www.whitmanandco.com](http://www.whitmanandco.com)

PrimeLocation.com

Zoopla.co.uk

rightmove

OnTheMarket.com