



The Avenue, London, W4
Guide Price £850,000

WHITMAN & CO.

SALES · LETTINGS · COMMERCIAL



A fabulous apartment set across the entire top floor of this exceptionally attractive detached Grade II listed house in the heart of the Bedford Park Conservation Area further benefitting from a sunny roof terrace and gated off-street parking. Offering close to 1000sqft of accommodation with well-proportioned rooms, the accommodation comprises an 18'2x17' reception room, 16'x16' main bedroom with fitted wardrobes, second double bedroom, a fitted kitchen, bathroom, spacious entrance hall, lovely roof terrace with views over surrounding gardens, gated allocated off street parking with EV charging point, eaves storage and a share in the freehold. Conveniently located just a short stroll from Chiswick High Road's array of shops, cafés, and restaurants, the flat also provides excellent transport links, including Turnham Green station (a mere 5-minute walk), local bus routes, and easy access to the A4/M4 for commuting to and from London. No onward chain.

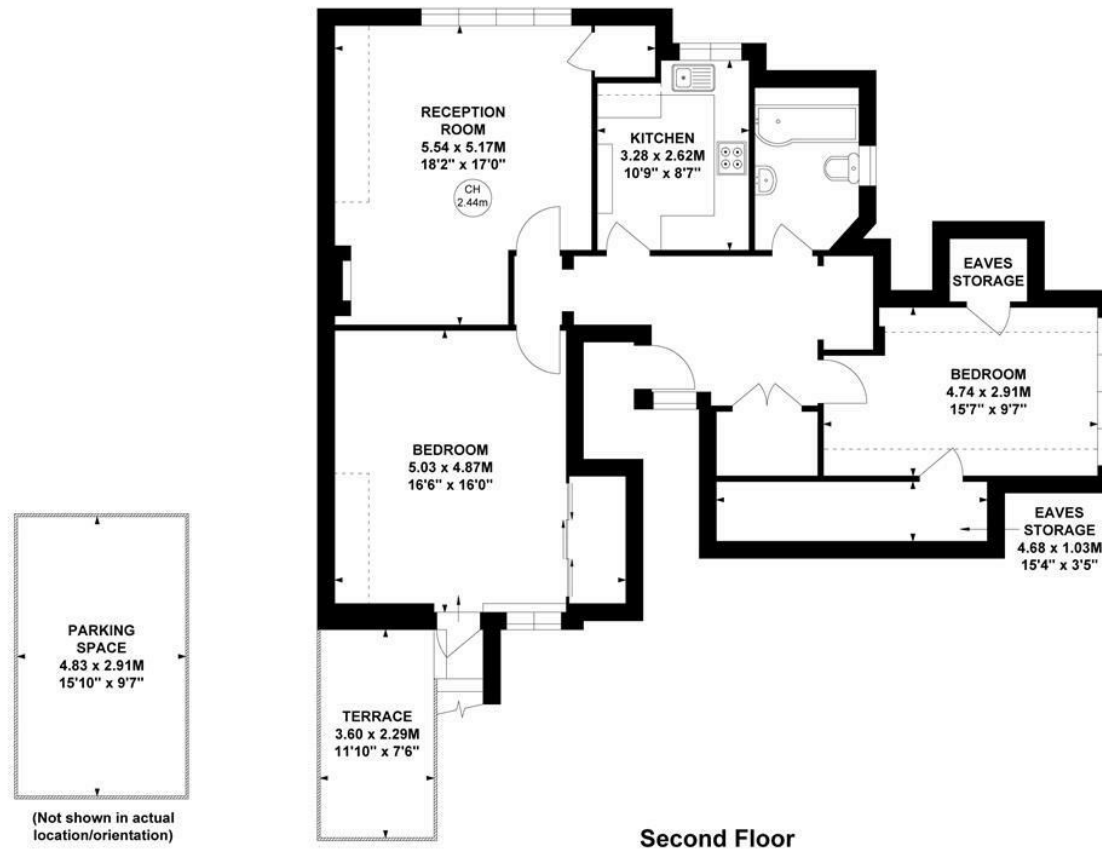


The Avenue, W4

Approximate gross internal area
92.39 sq m / 994 sq ft
(Including Eaves Storage)
Eaves Storage
6.28 sq m / 67 sq ft



Key :
CH - Ceiling Height



Not to scale, for guidance only and must not be relied upon as a statement of fact.
All measurements and areas are approximate only

- Lateral apartment of close to 1000sqft
- Sunny roof terrace with lovely views
- Secure off street parking with EV charger

- Set within a detached Grade II listed building
- Well proportioned accommodation
- No onward chain

Tenure - Leasehold + share of freehold
Lease Length - 989 Years remaining
Ground rent - Peppercorn
Service Charge - £3000 pa
Local Authority - Ealing
Council Tax - Band F

