



Spring Grove, London, W4
Guide Price £1,500,000

WHITMAN & CO.

SALES · LETTINGS · COMMERCIAL



This exceptional four-bedroom penthouse offers a rare combination of space, style, and breathtaking views. Featuring a south-facing wraparound roof terrace, perfect setting for outdoor living and entertaining.

Spanning 1,848 sq. ft., the property boasts a 24' dual-aspect reception room with impressive 3.8m high ceilings, a fully integrated kitchen, and a 24' gallery with vaulted ceilings, enhancing the sense of light and openness. Two of the four bedrooms offer direct balcony access, while three well-appointed bathrooms, including two en-suites, are also featured.

The penthouse benefits from secure gated parking for two cars and is ideally located just moments from the River Thames and the historic Strand on the Green, known for its charming riverside pubs and scenic walks. Excellent transport links via Kew Bridge and Gunnersbury stations, as well as multiple bus routes, provide easy access to central London and beyond.

Offered with no onward chain.

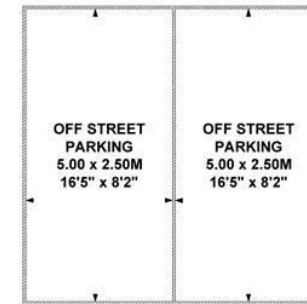
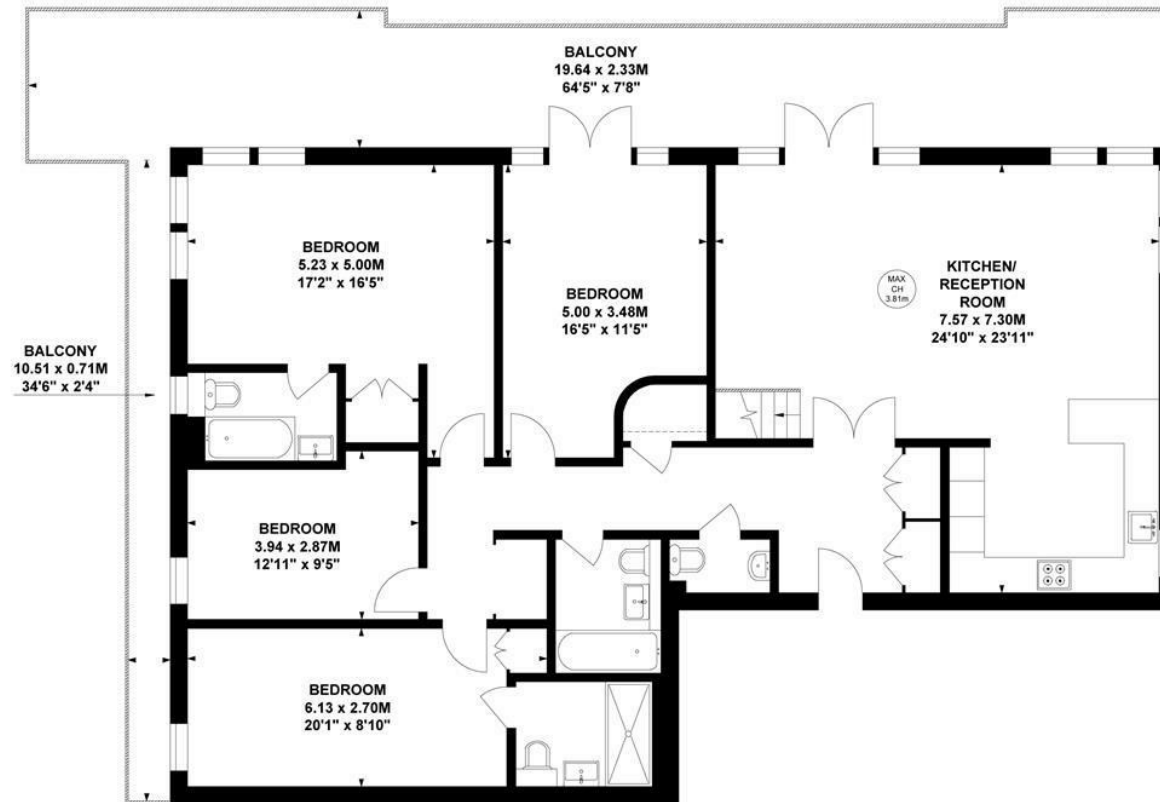


Albany Court, W4

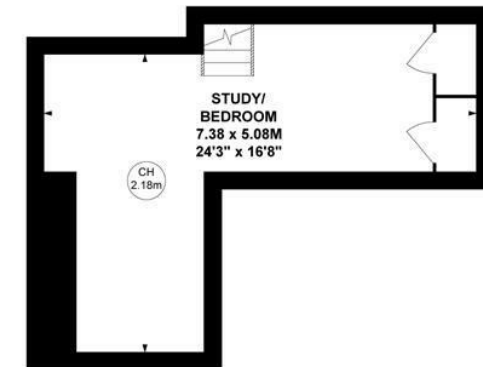
Approximate Gross Internal Area
171.67 sq m / 1848 sq ft



Key :
CH - Ceiling Height



(Not shown in actual location/orientation)



Third Floor

Mezzanine

Not to scale, for guidance only and must not be relied upon as a statement of fact.
All measurements and areas are approximate only

- South facing wrap around roof terrace
- 1848 sq ft
- No onward chain

- Secure gated parking for two cars
- Four bedroom penthouse
- Fantastic transport links

Tenure - Leasehold
Lease length - 123 Years remaining
Ground Rent - £500 pa
Service Charge - £7,643.16 pa
Local authority - Hounslow
Council tax - Band G

